
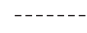
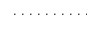
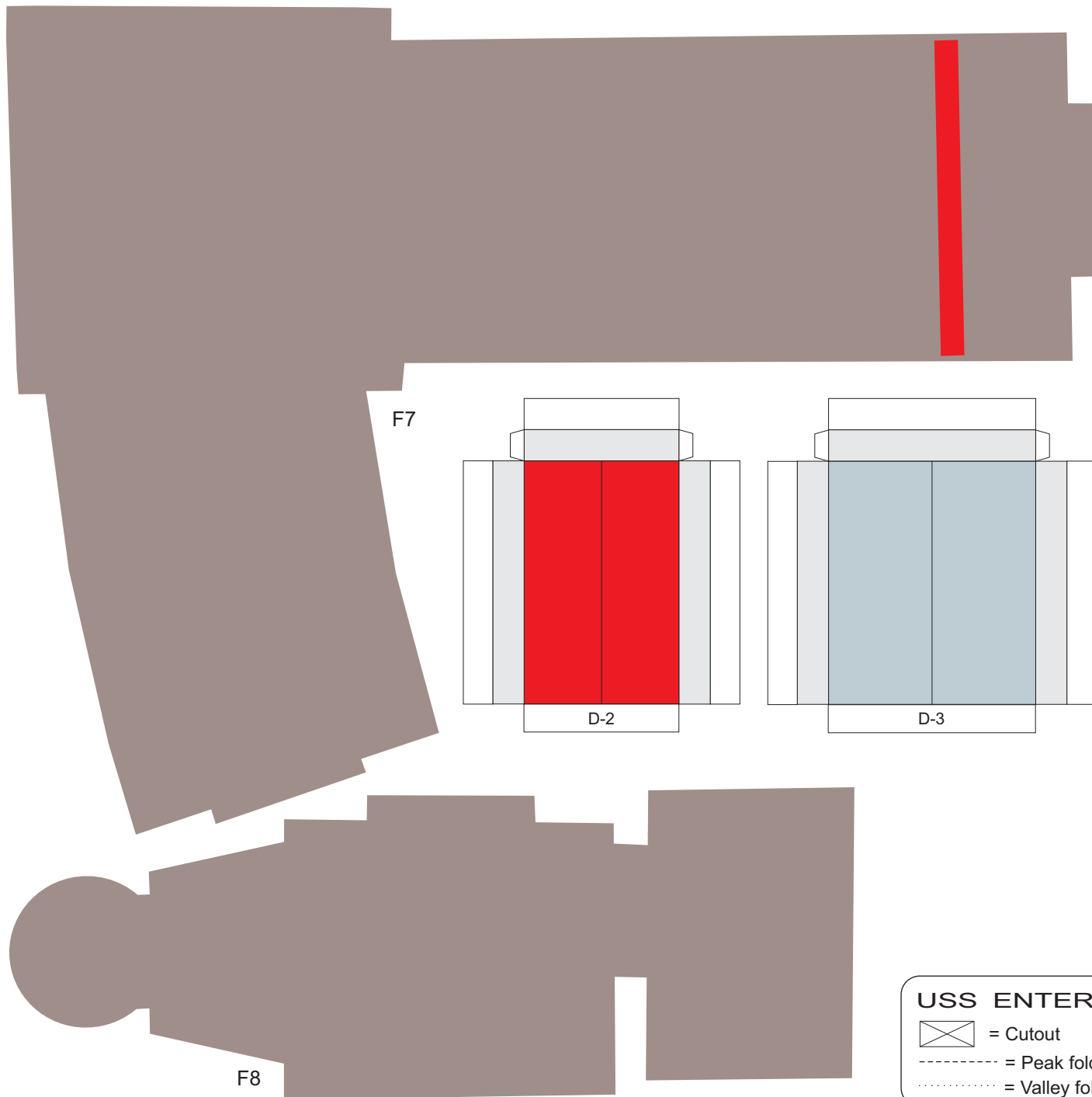


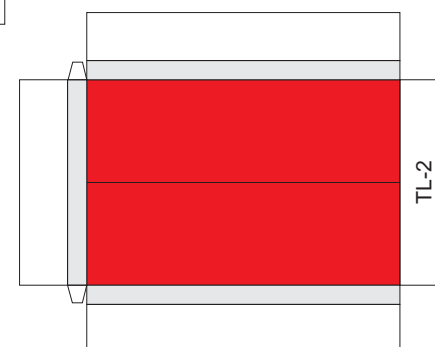
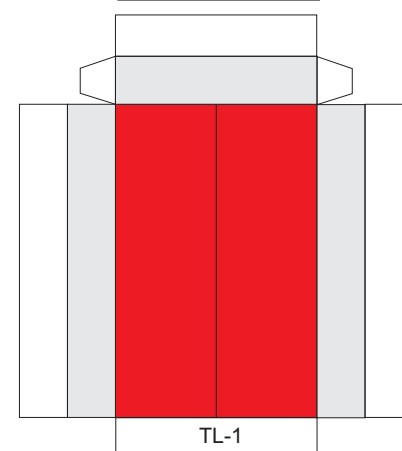
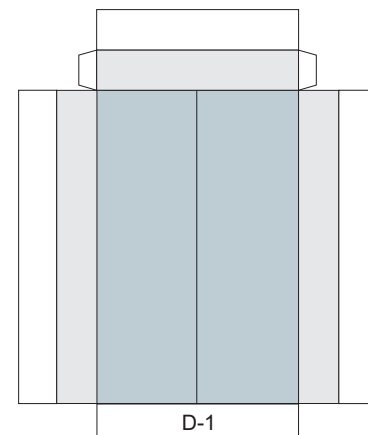
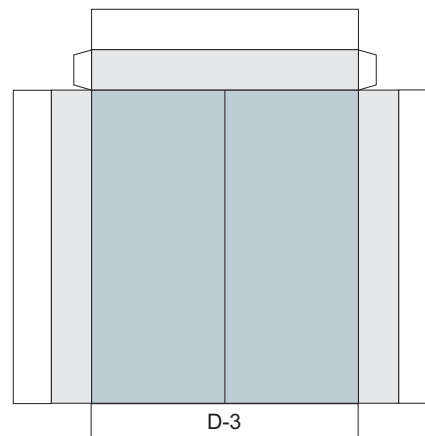
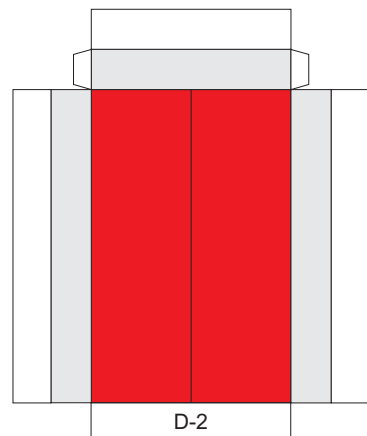
USS ENTERPRISE CORRIDOR 1:48 scale

-  = Cutout
-  = Peak fold
-  = Valley fold



F7

F8



USS ENTERPRISE CORRIDOR 1:48 scale



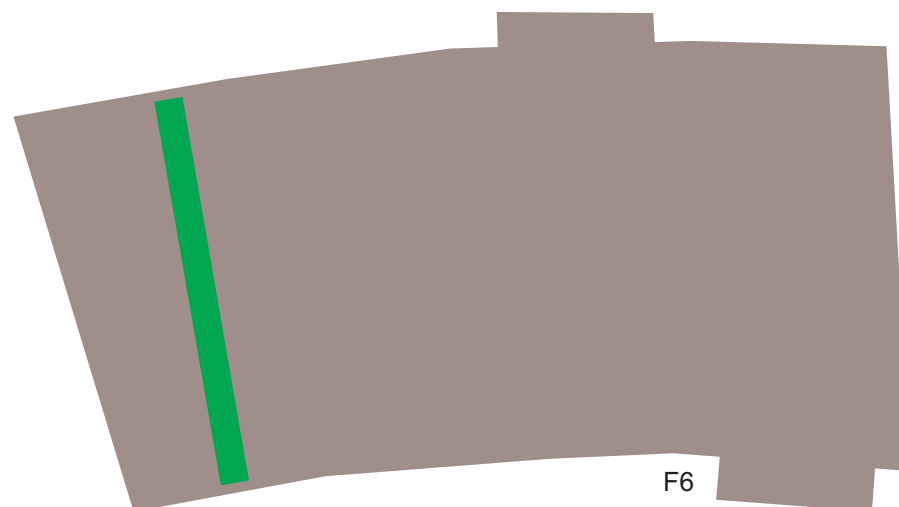
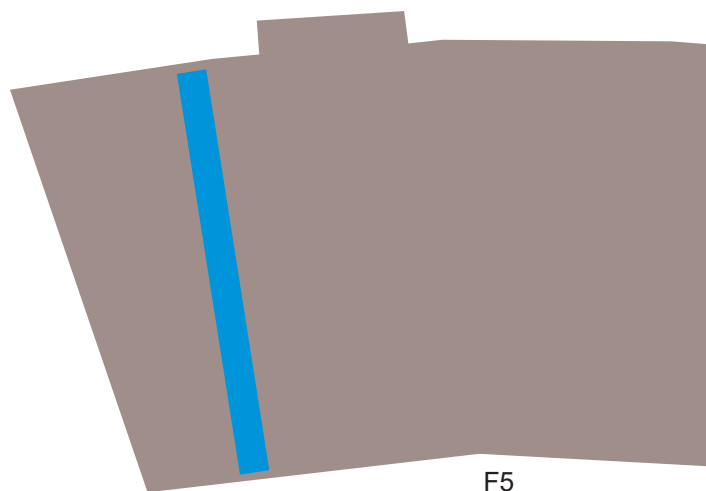
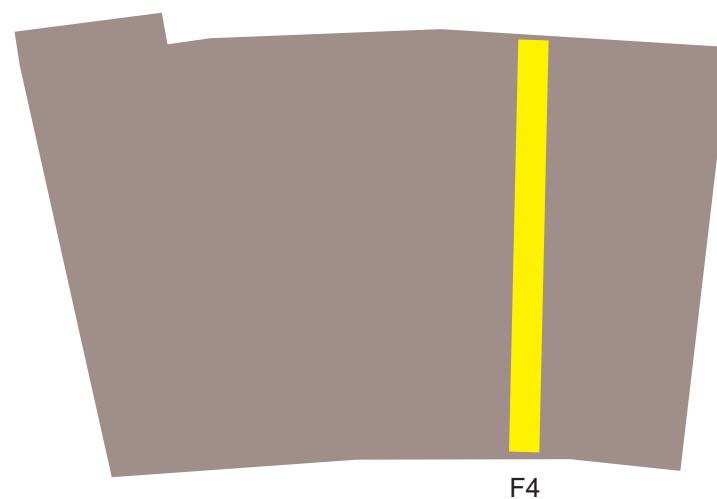
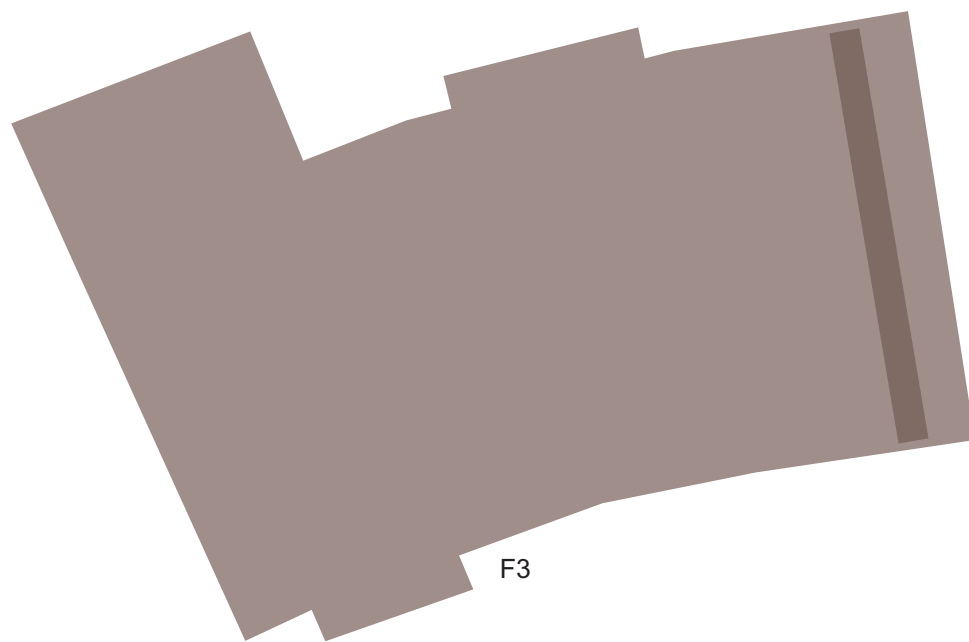
= Cutout



= Peak fold



= Valley fold



USS ENTERPRISE CORRIDOR 1:48 scale



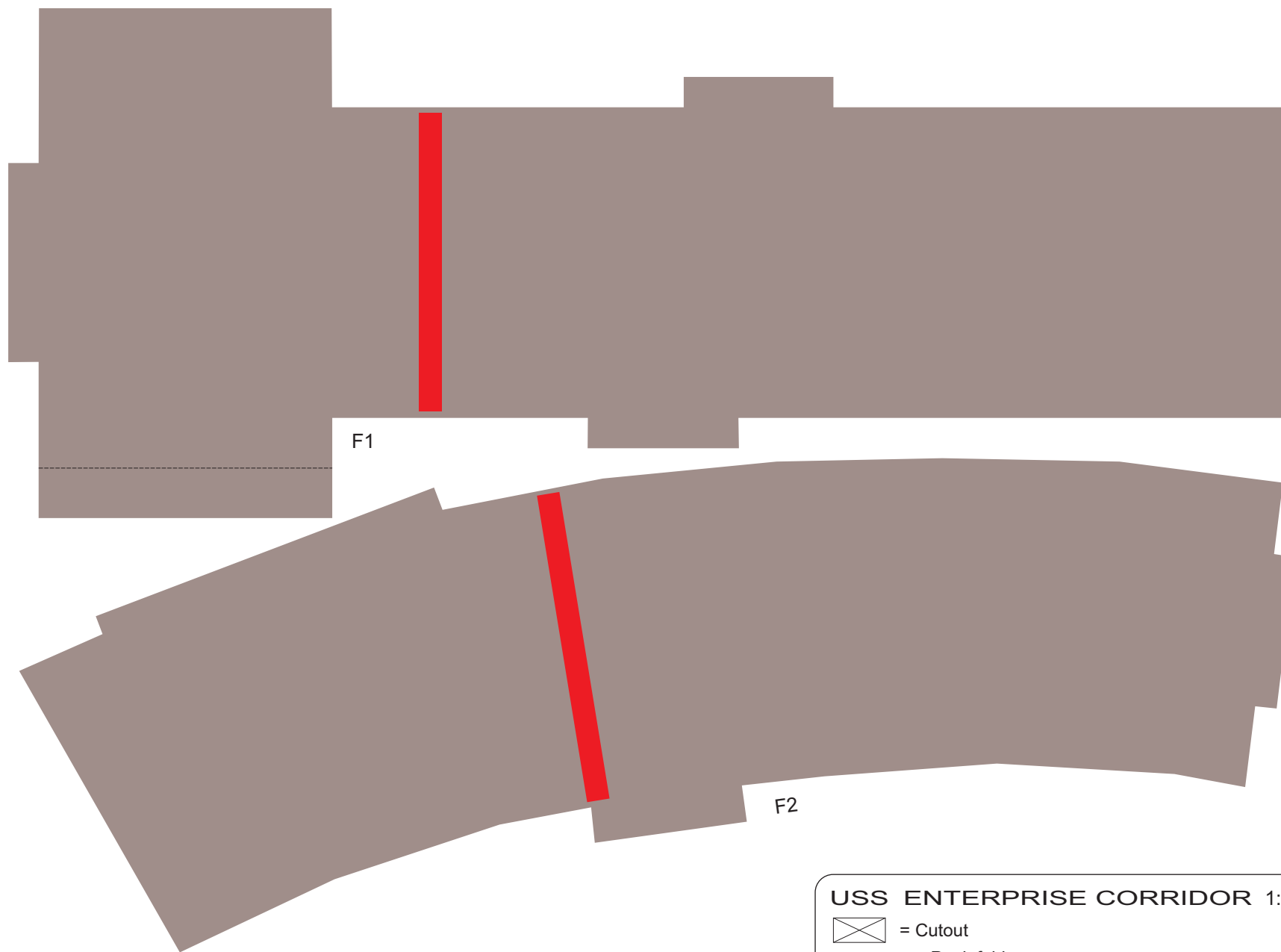
= Cutout



= Peak fold



= Valley fold



F1

F2

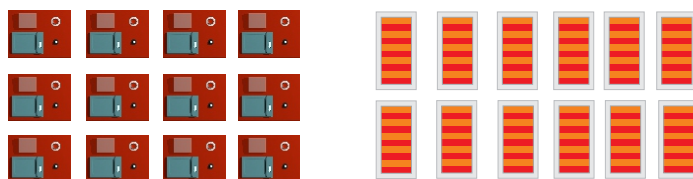
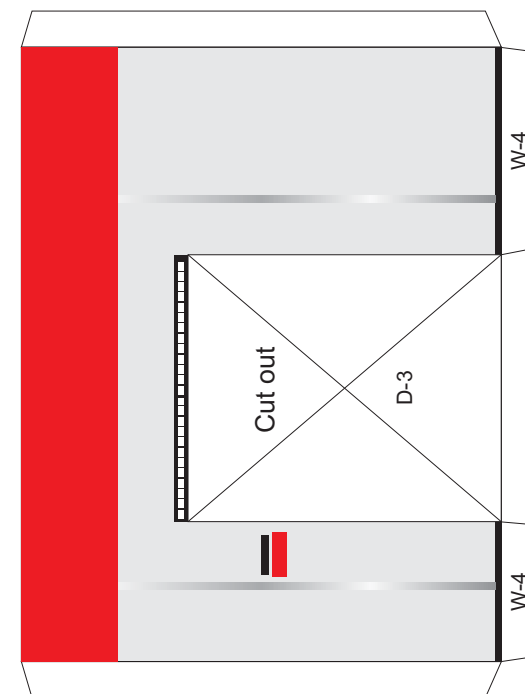
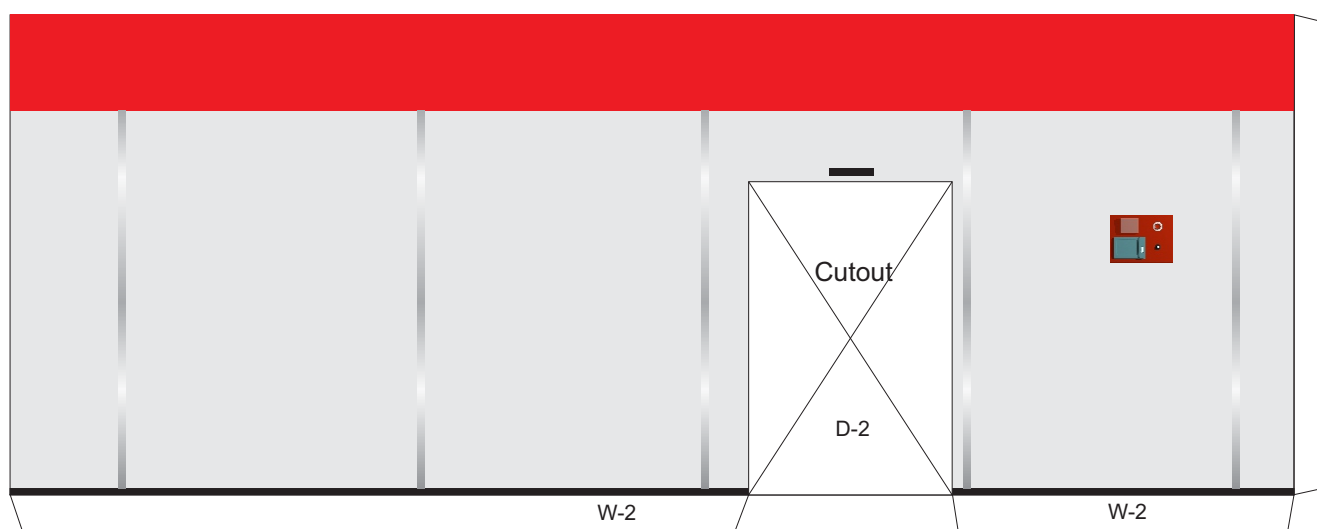
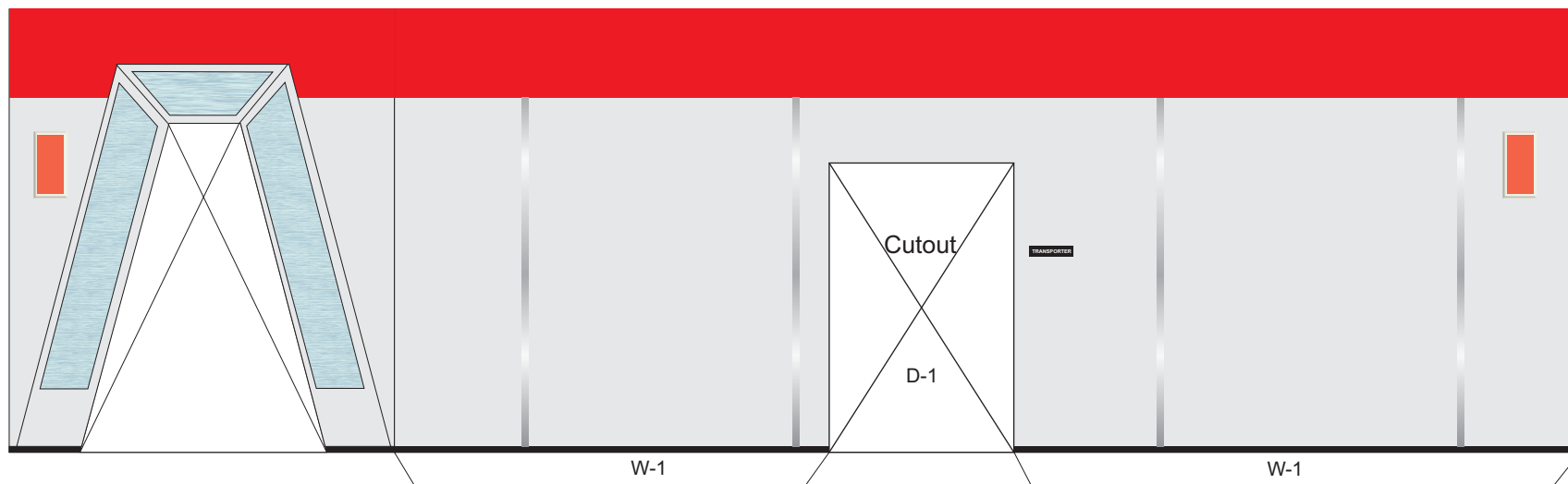
USS ENTERPRISE CORRIDOR 1:48 scale



= Cutout


----- = Peak fold

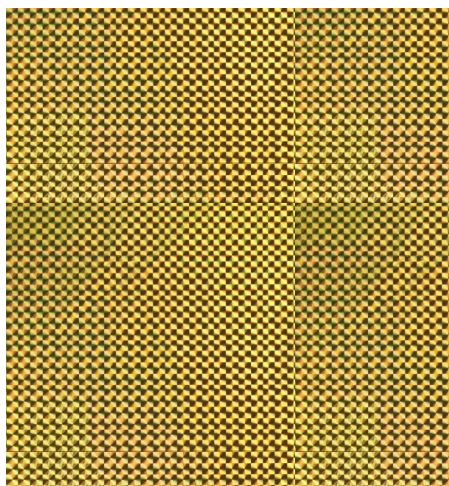
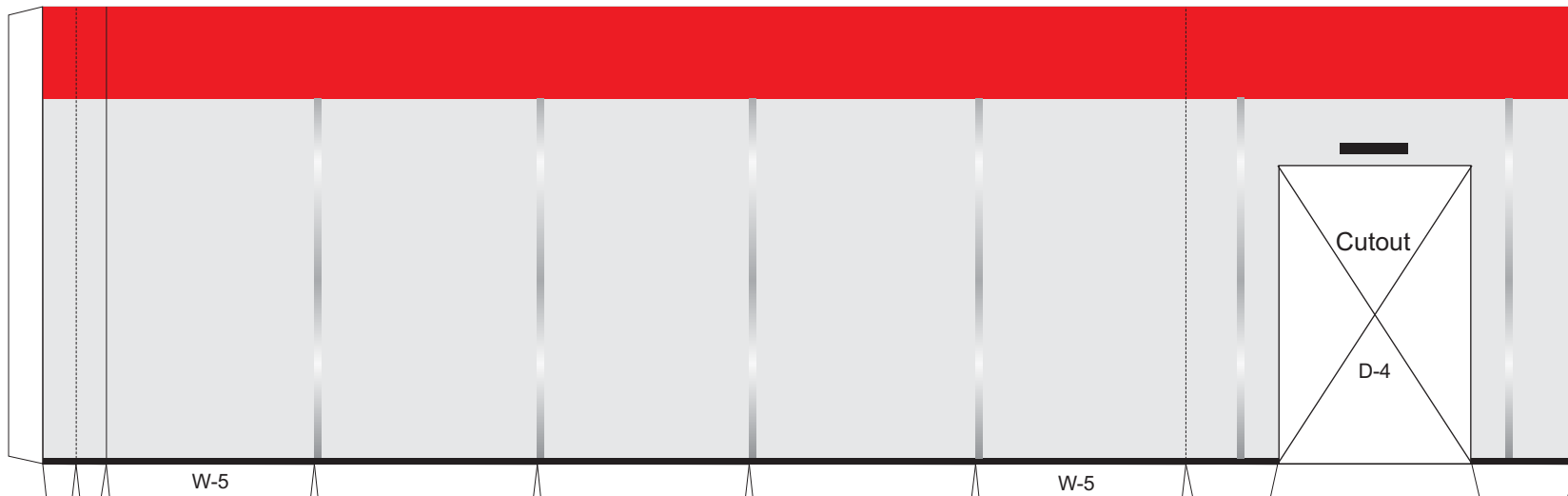
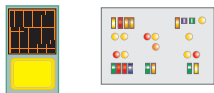
..... = Valley fold



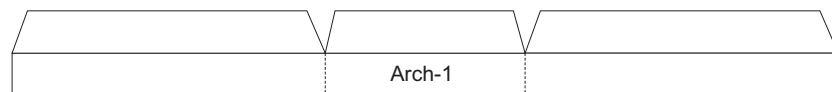
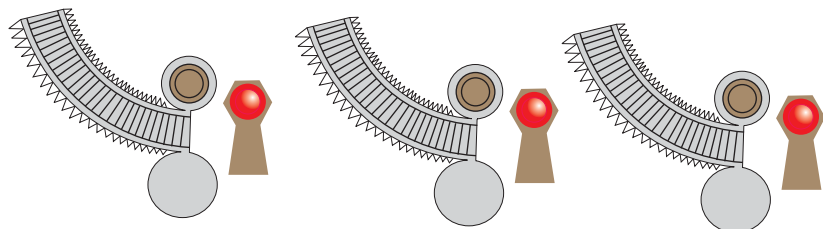
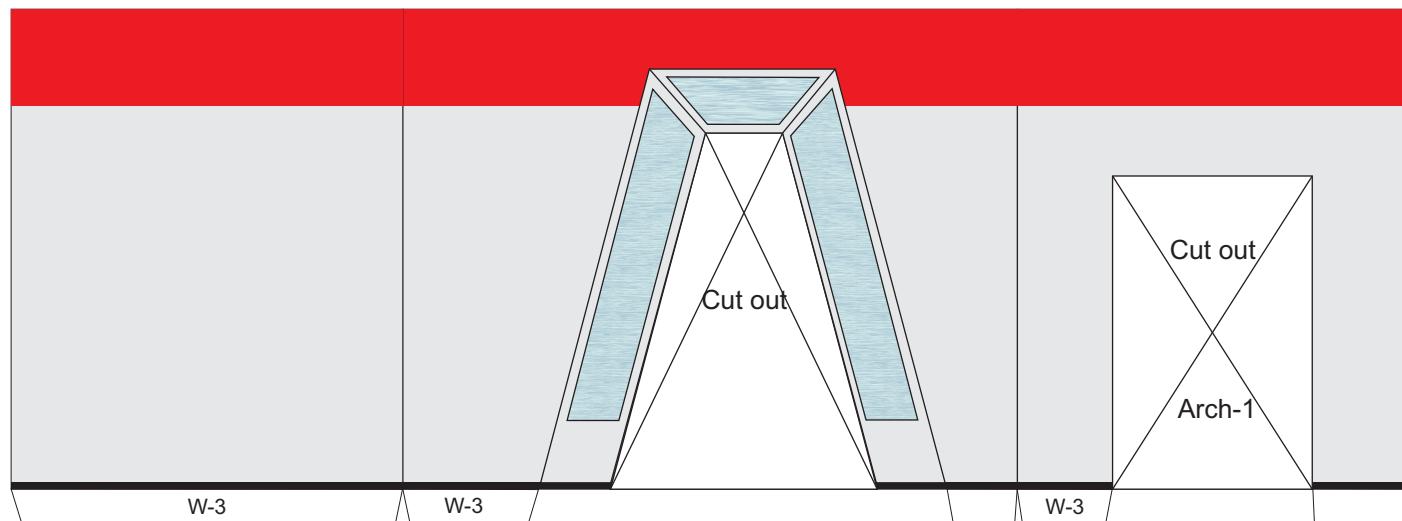
Alert lights & communicators:
Cut paste over existing pieces.

USS ENTERPRISE CORRIDOR 1:48 scale

-  = Cutout
- = Peak fold
- = Valley fold

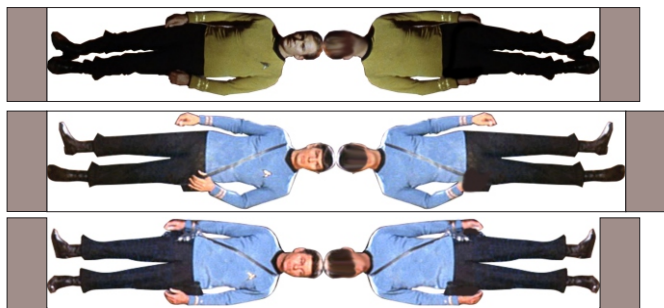
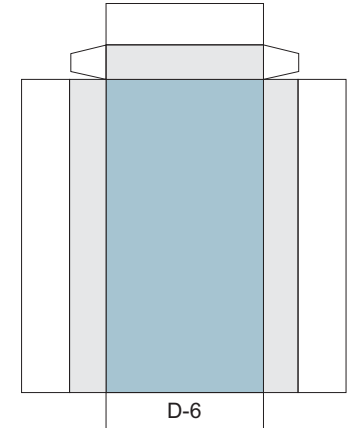
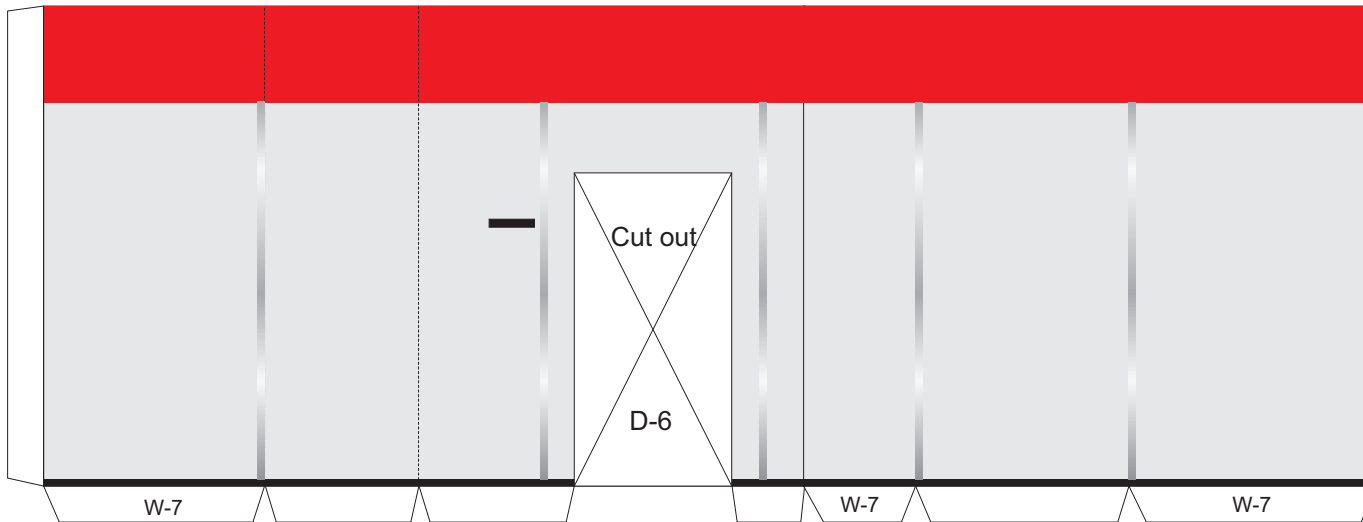
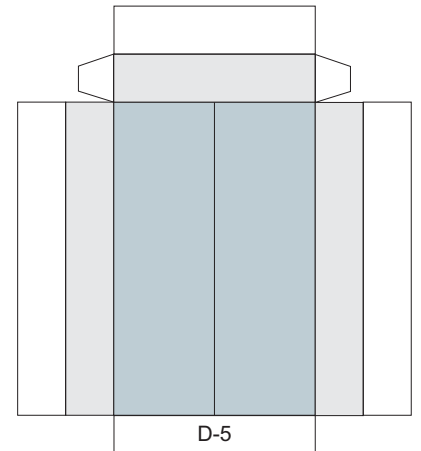
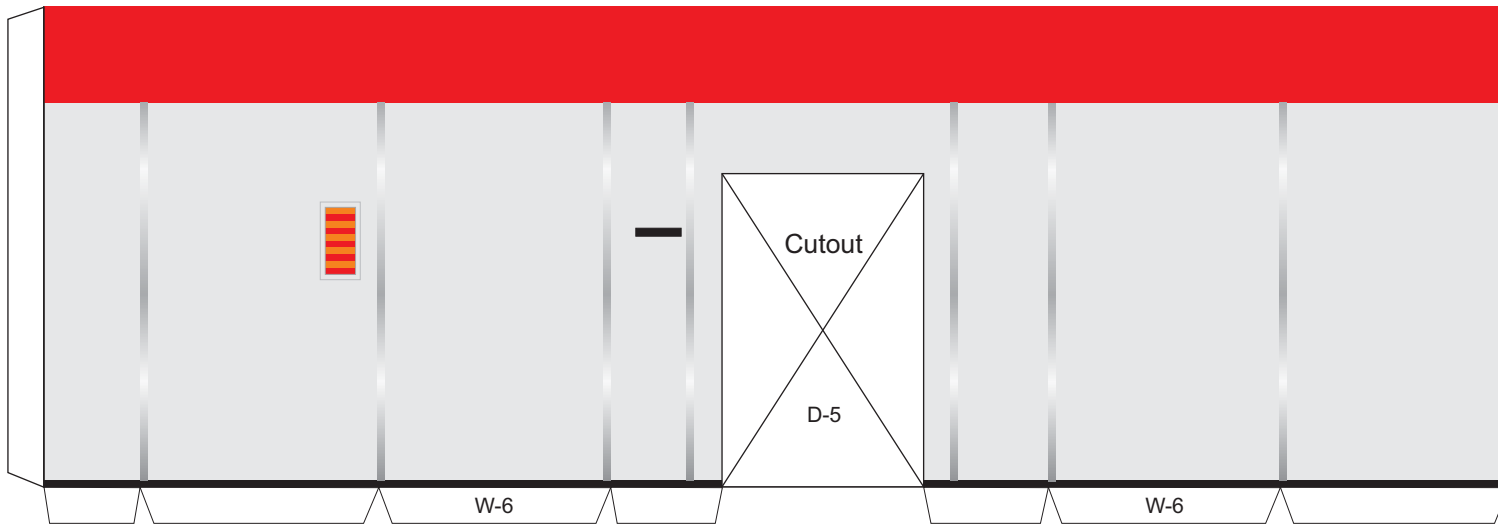


Jeffries tube #2 wall



USS ENTERPRISE CORRIDOR 1:48 scale

- = Cutout
- = Peak fold
- = Valley fold



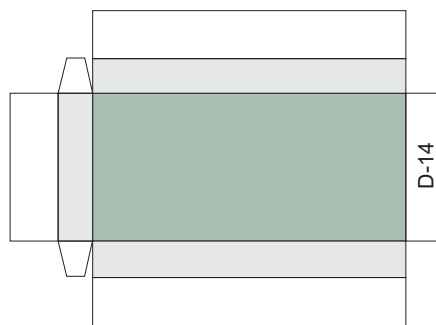
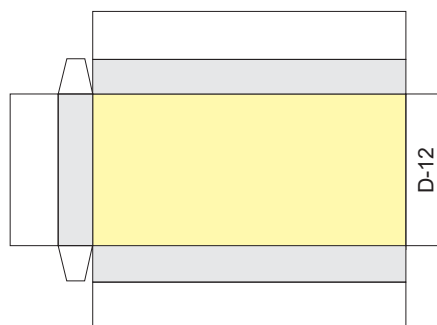
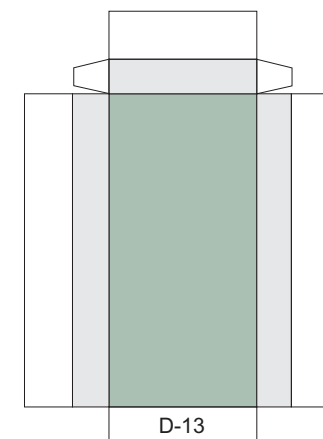
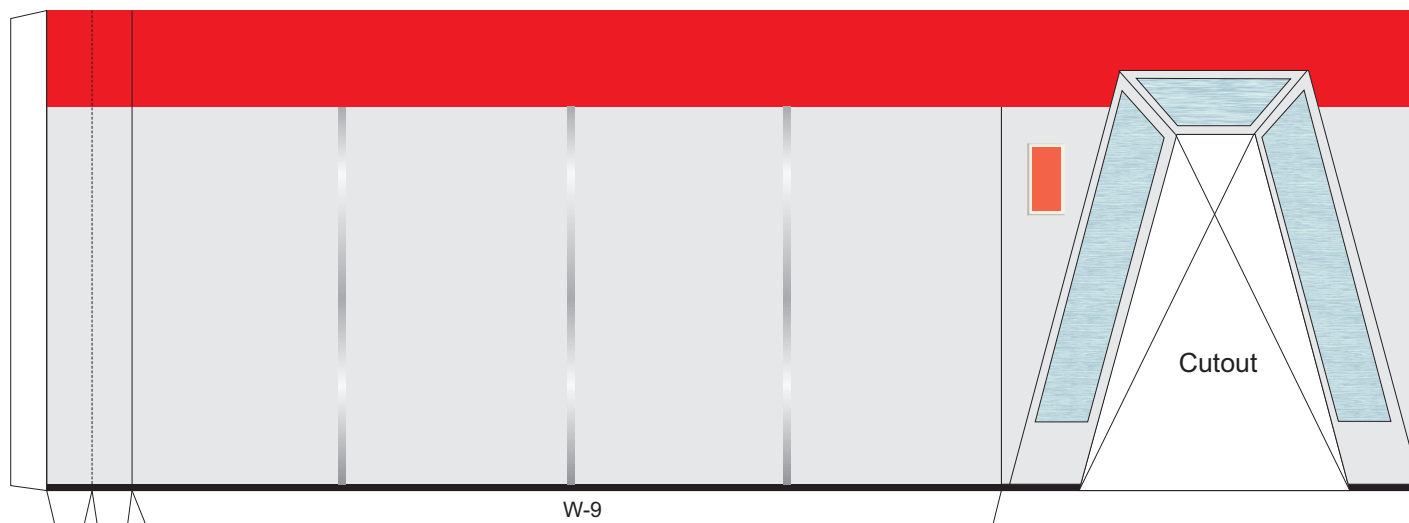
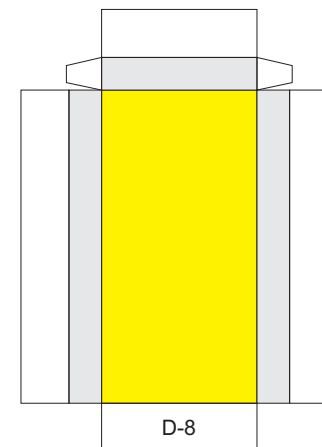
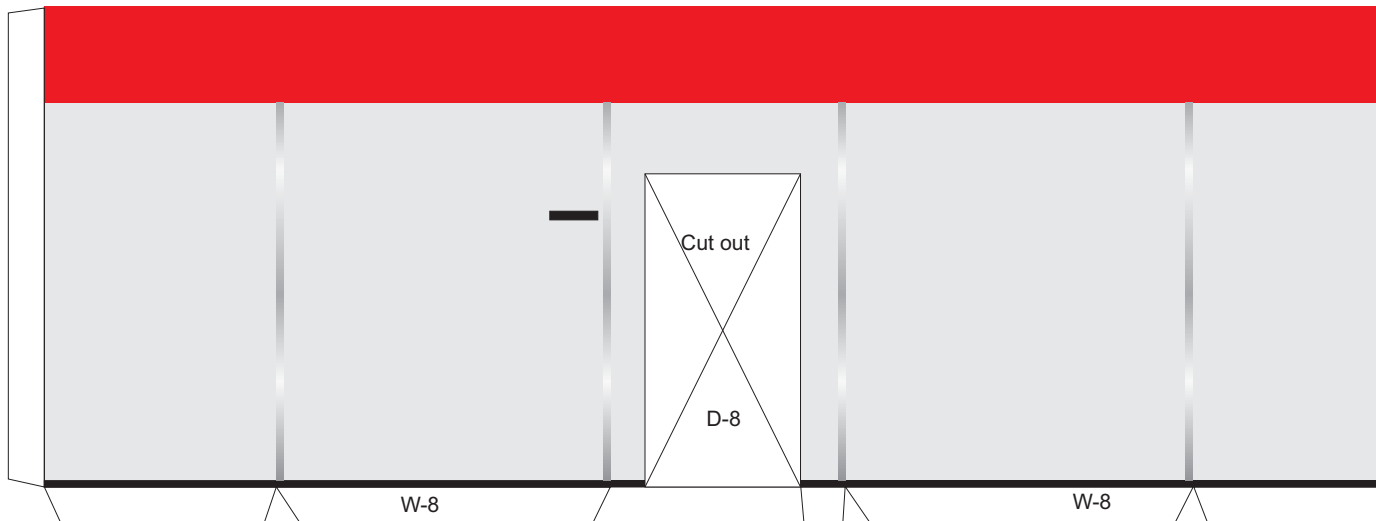
USS ENTERPRISE CORRIDOR 1:48 scale



= Cutout

----- = Peak fold

..... = Valley fold



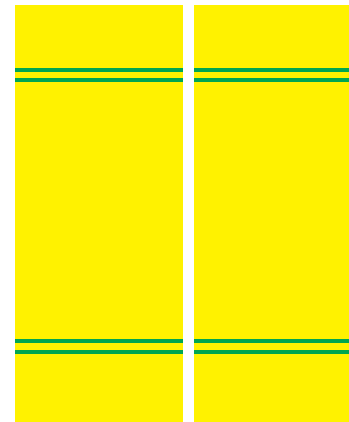
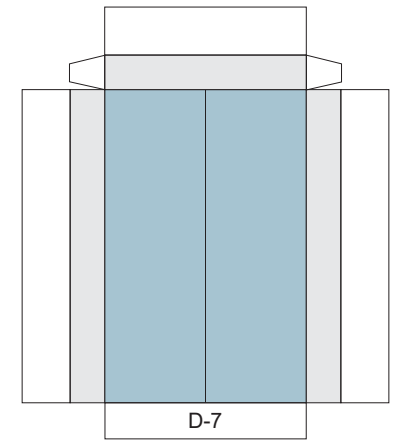
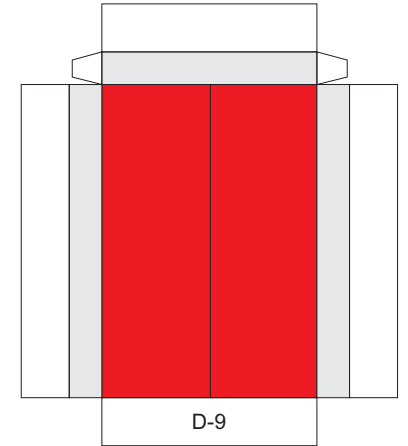
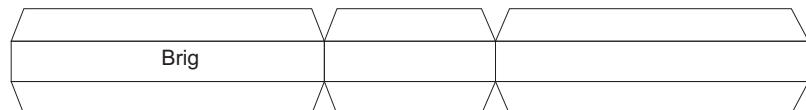
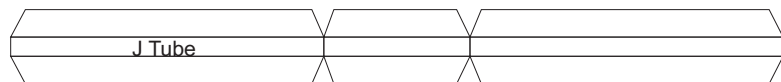
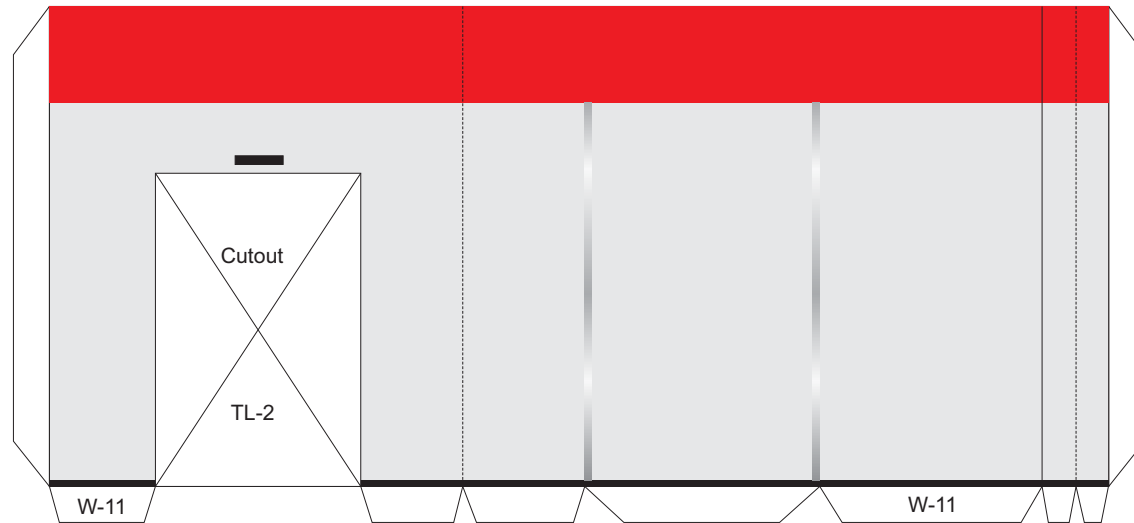
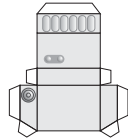
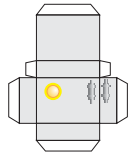
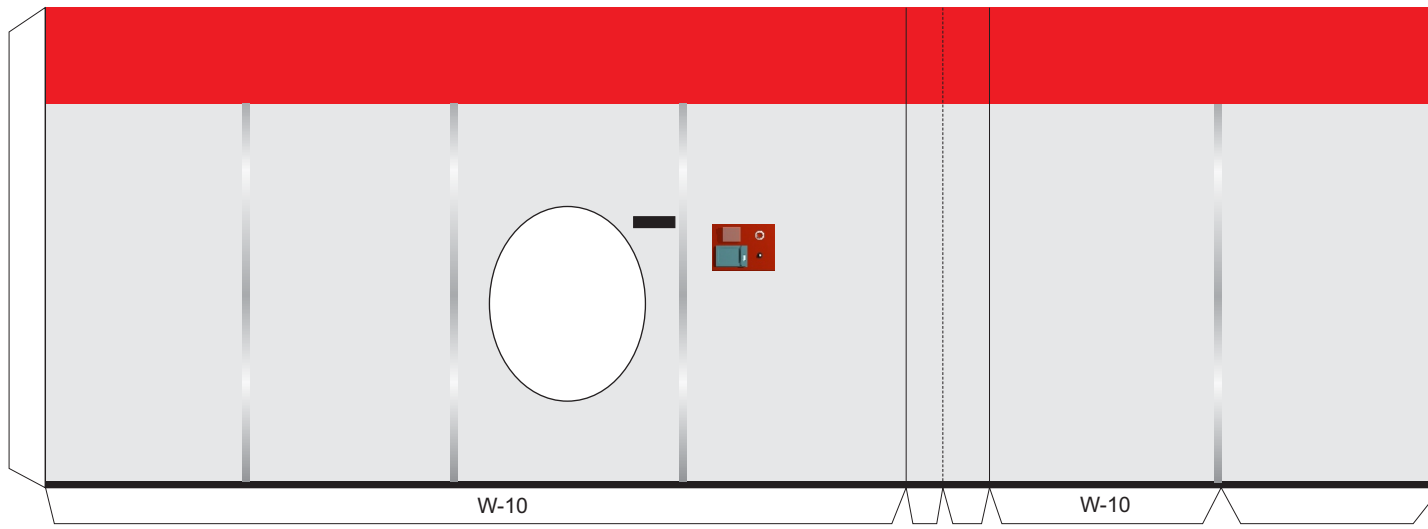
USS ENTERPRISE CORRIDOR 1:48 scale



= Cutout

----- = Peak fold

..... = Valley fold



USS ENTERPRISE CORRIDOR 1:48 scale



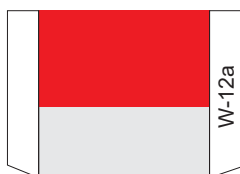
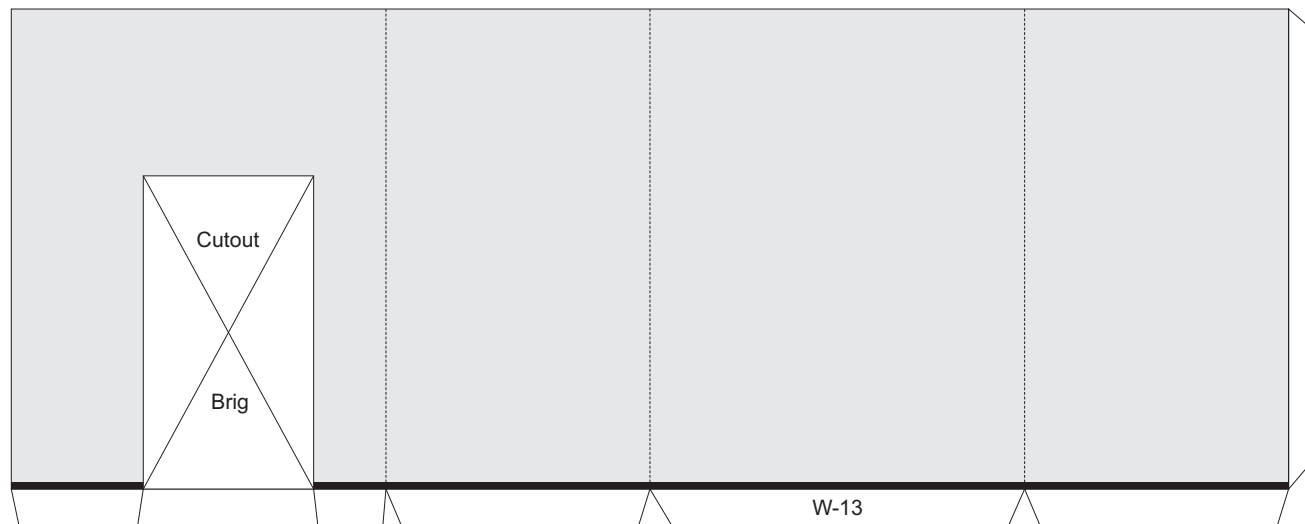
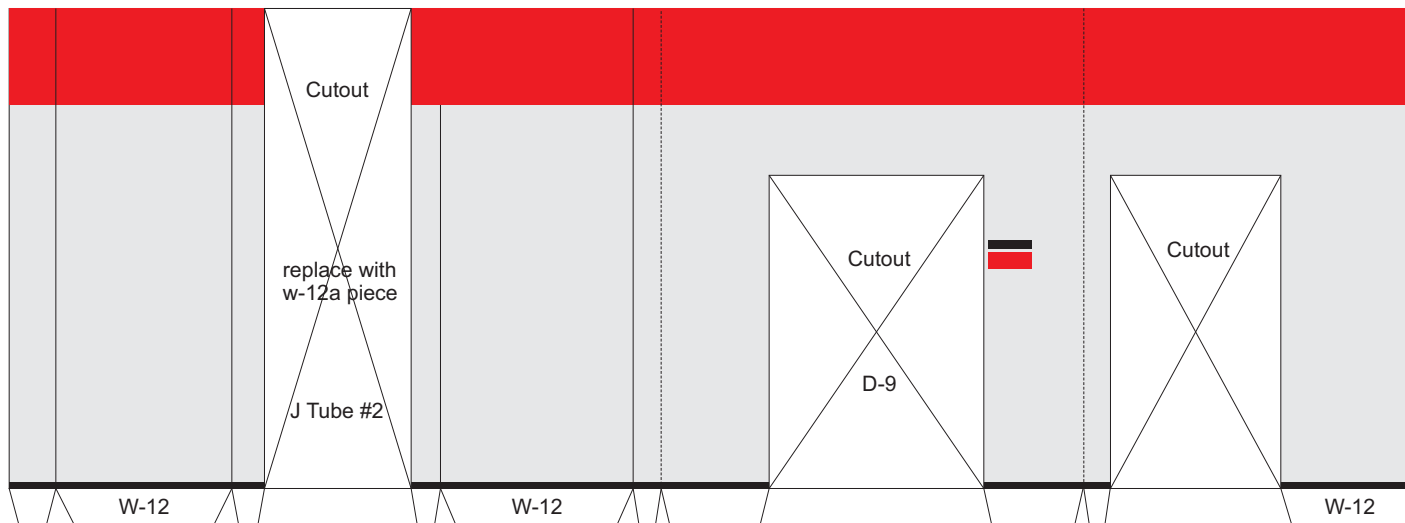
= Cutout



= Peak fold



= Valley fold



Curve W-12a outward.

USS ENTERPRISE CORRIDOR 1:48 scale



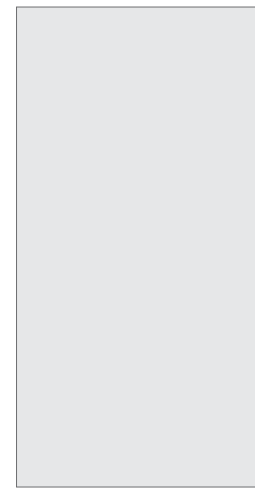
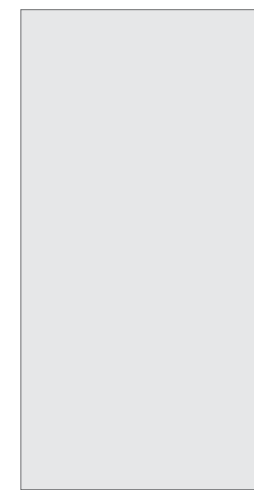
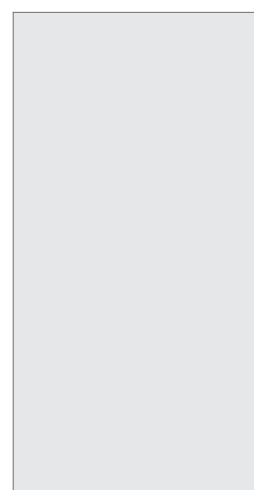
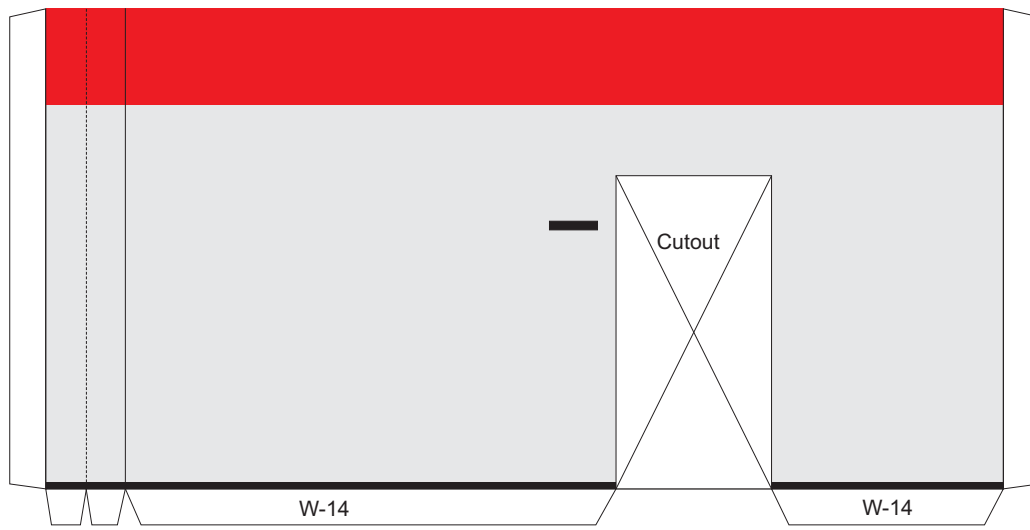
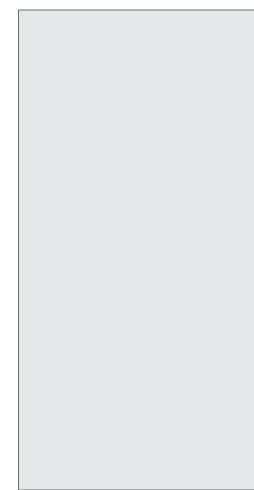
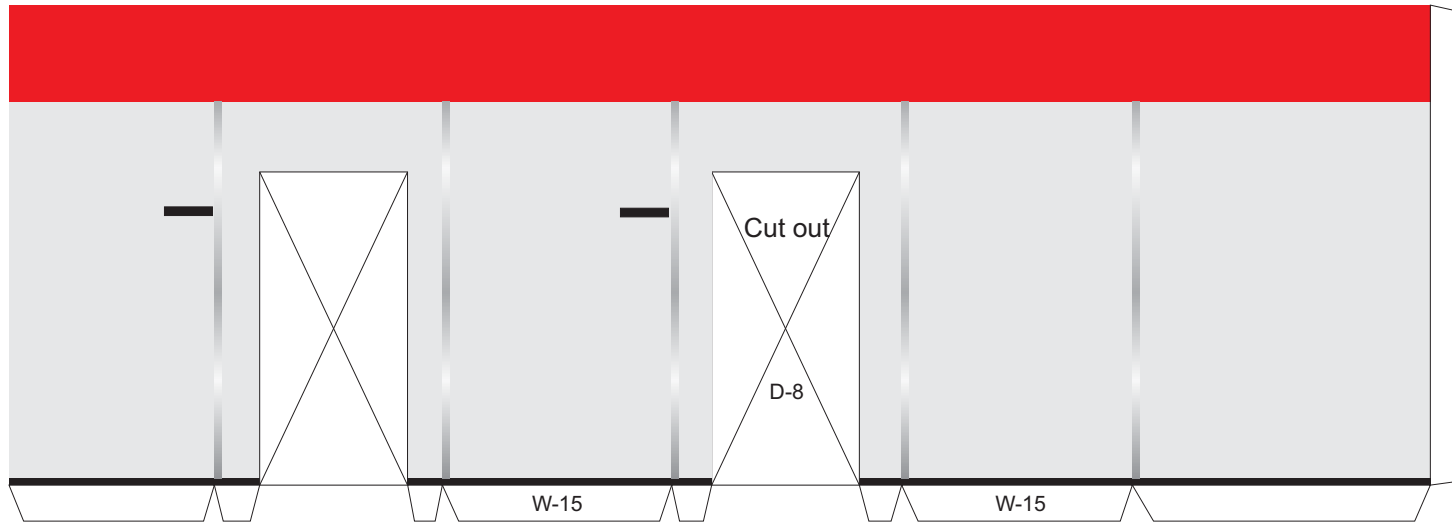
= Cutout



= Peak fold

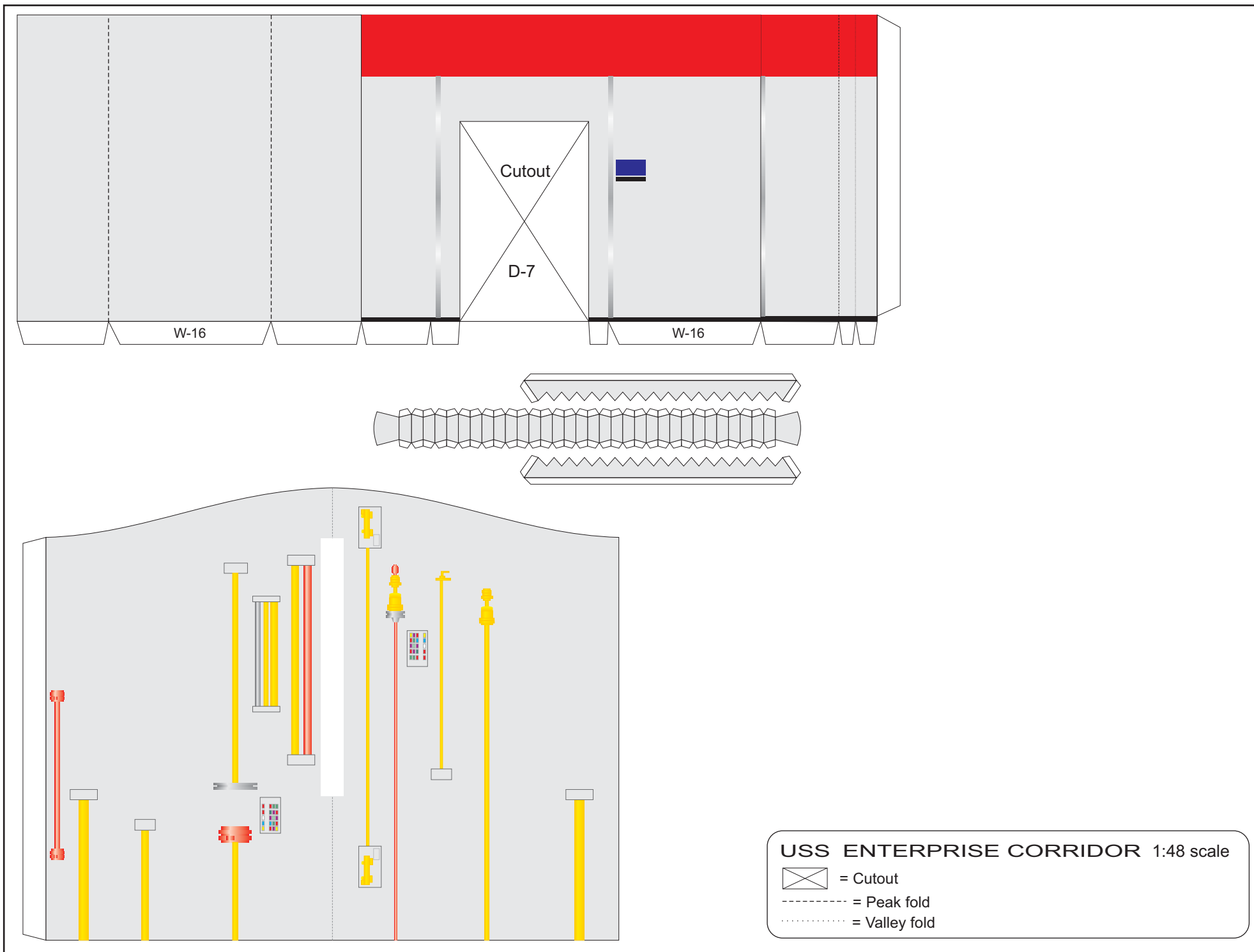


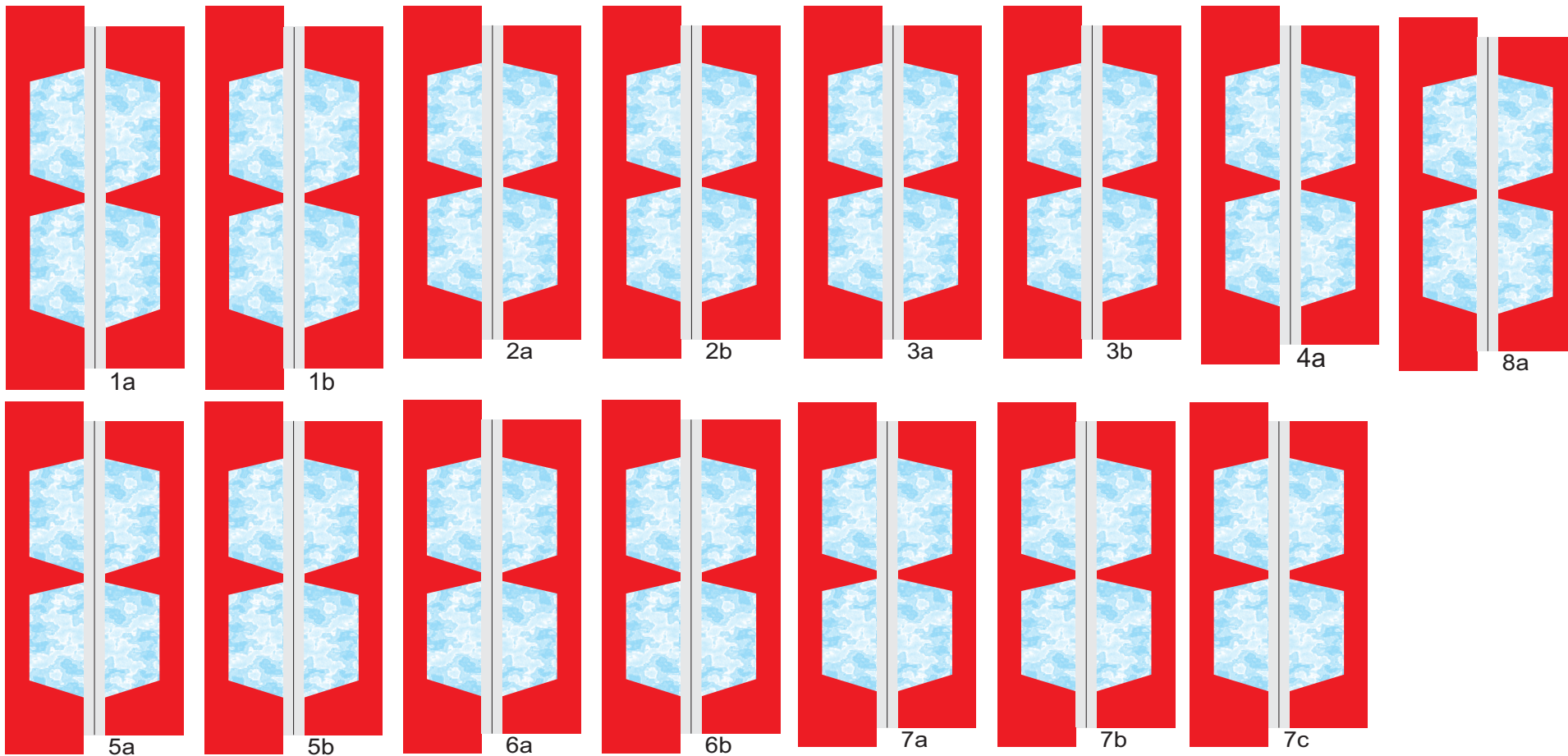
= Valley fold




USS ENTERPRISE CORRIDOR 1:48 scale

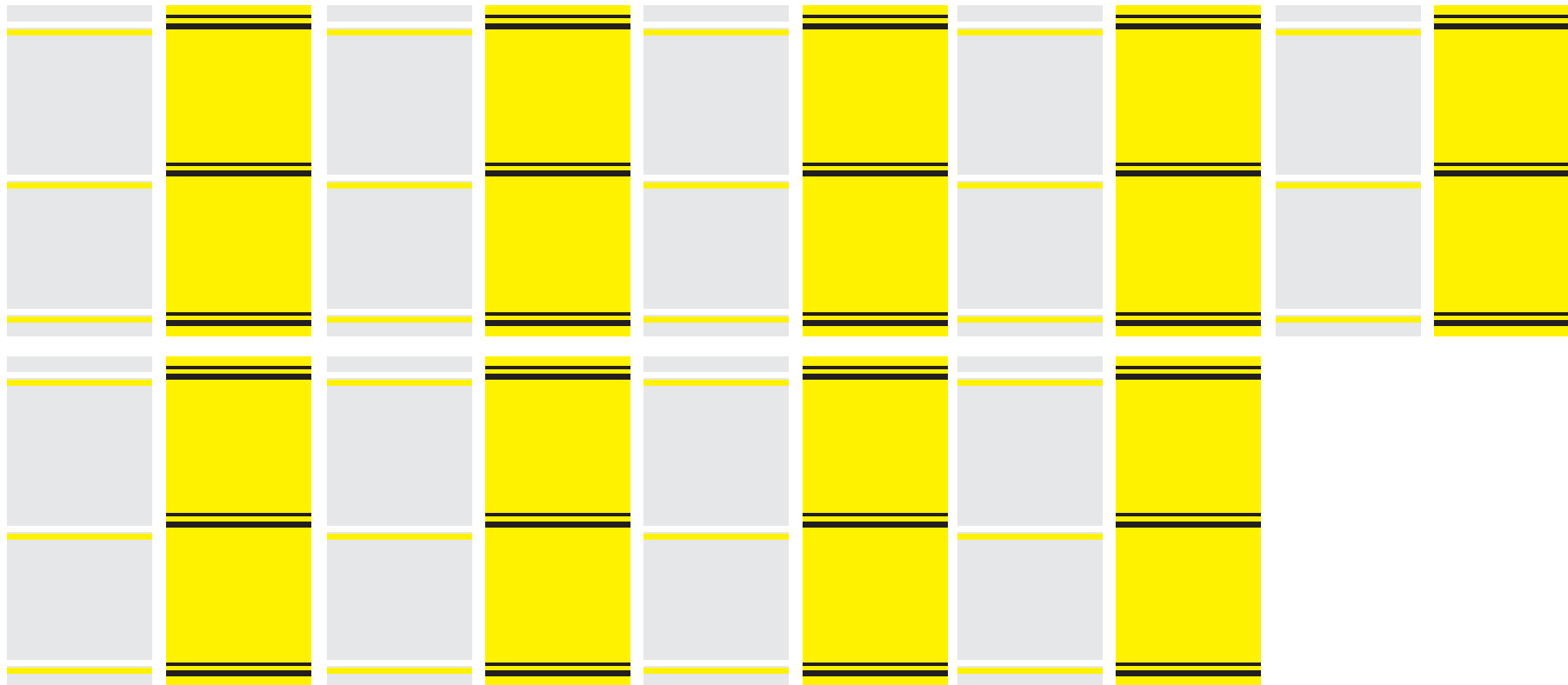
 = Cutout
 ----- = Peak fold
 = Valley fold



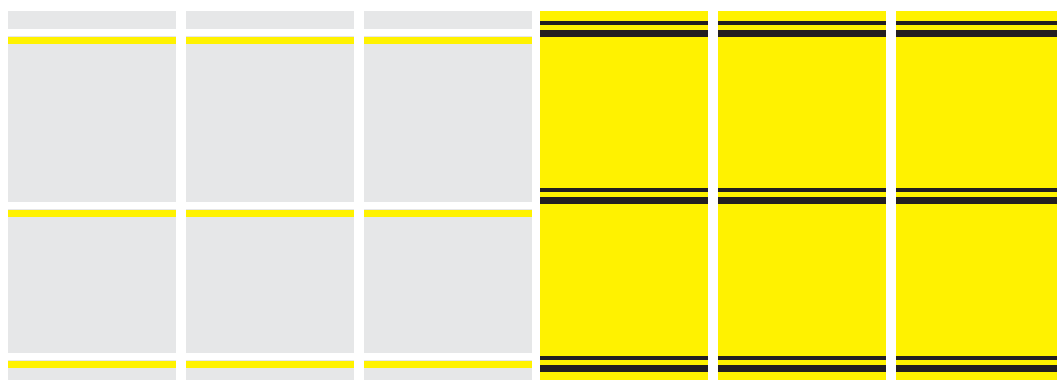


USS ENTERPRISE CORRIDOR 1:48 scale

-  = Cutout
- = Peak fold
- = Valley fold



2a,2b,3a,3b,5a,5b,6a,6b,8a.



7a,7b,7c.

Note:
Print this page on regular bond paper.
Apply glue and roll into tubes

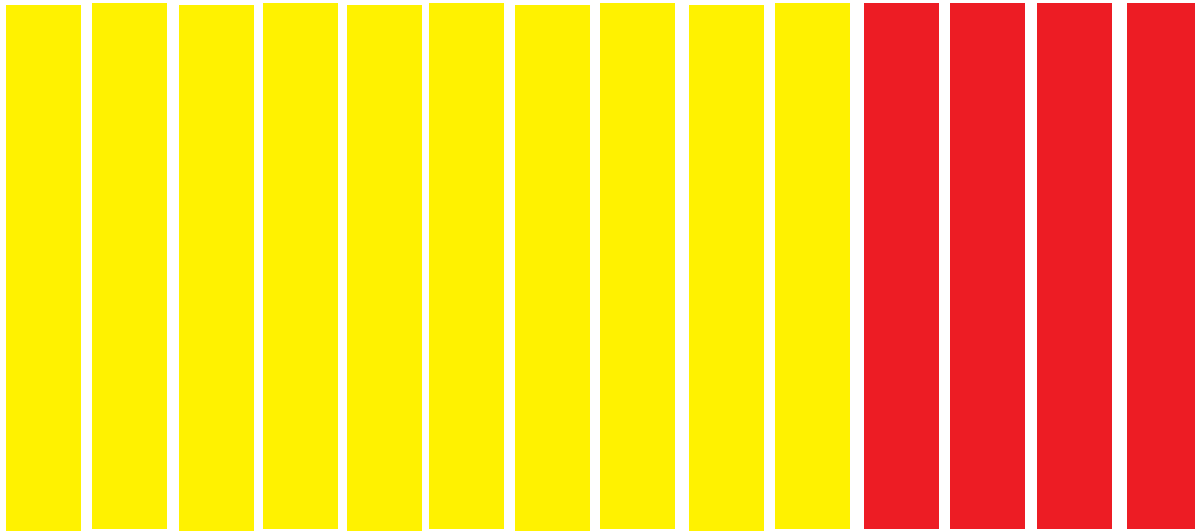
USS ENTERPRISE CORRIDOR 1:48 scale



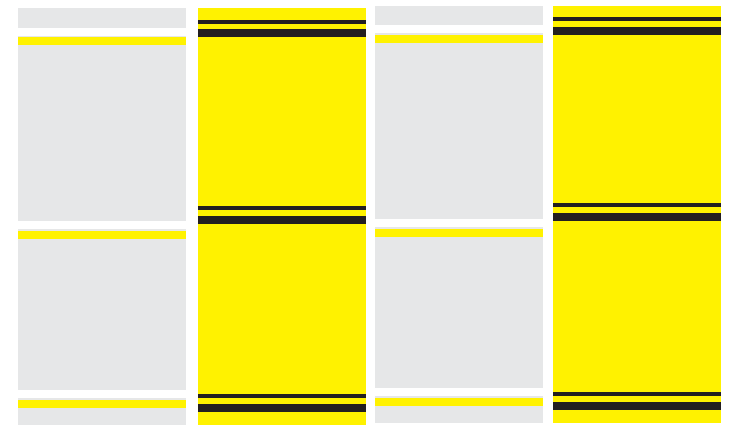
= Cutout

----- = Peak fold

..... = Valley fold

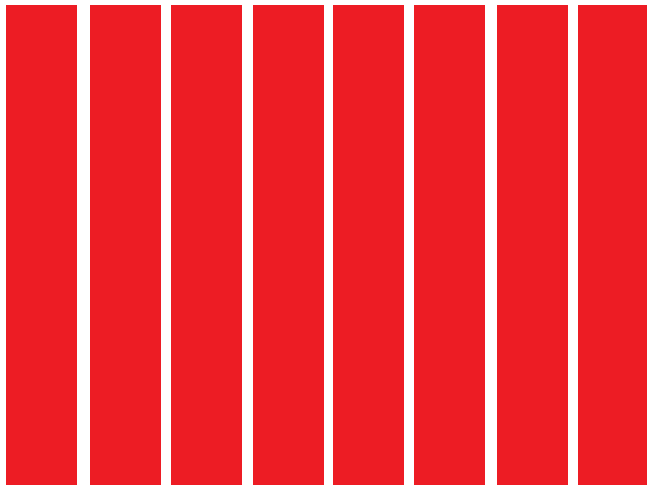


Jeffries tube #1 pipes
roll tight cut as needed.

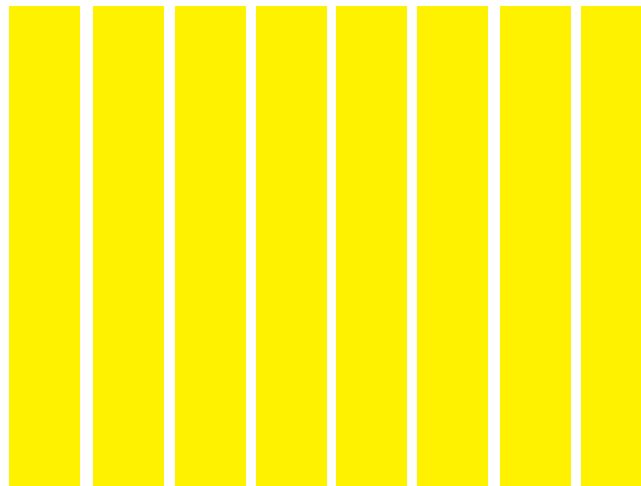


1a

1b.



Jeffries tube #2 ladder
roll tight cut as needed.



Ladder roll tight cut as needed.

Note:
Print this page on regular bond paper.
Apply glue and roll into tubes

USS ENTERPRISE CORRIDOR 1:48 scale



= Cutout

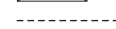
----- = Peak fold

..... = Valley fold

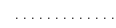
USS ENTERPRISE CORRIDOR 1:48 scale



= Cutout



= Peak fold

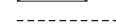


= Valley fold

USS ENTERPRISE CORRIDOR 1:48 scale



= Cutout



= Peak fold

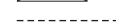


= Valley fold

USS ENTERPRISE CORRIDOR 1:48 scale



= Cutout



= Peak fold



= Valley fold