

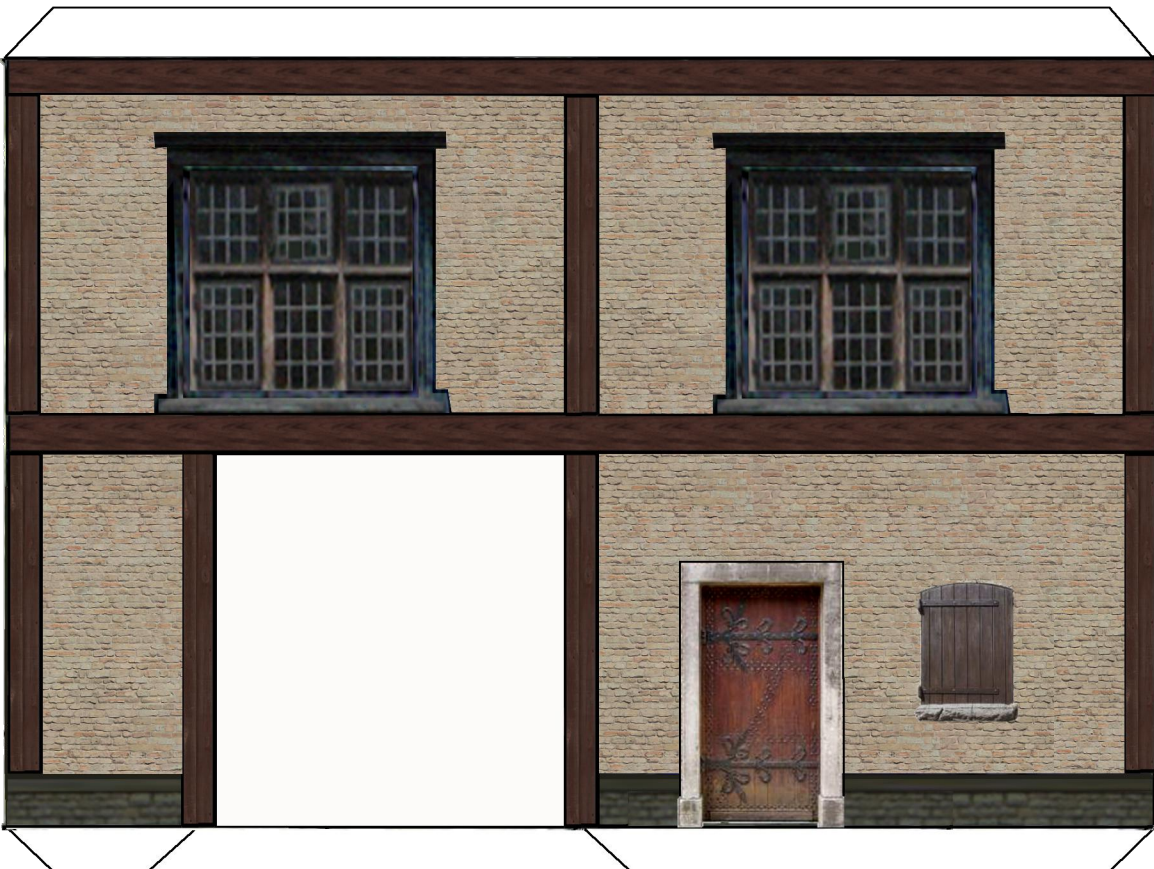
Cardboard Warriors

The paper miniatures wargaming forum

Font Side



Back Side



↓ Feed this end into machine cutter ↓

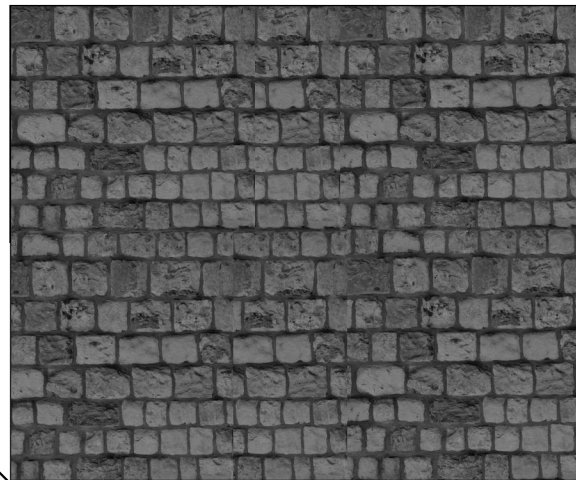
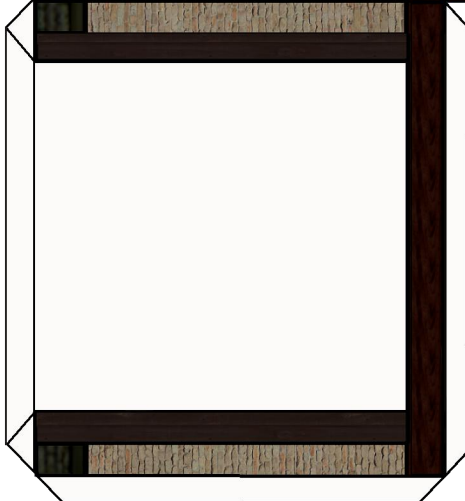
Printing: turn scaling OFF, have centering ON, set to GOOD or BEST setting, Use Matte Photo paper for best results.

Cardboard Warriors

The paper miniatures wargaming forum

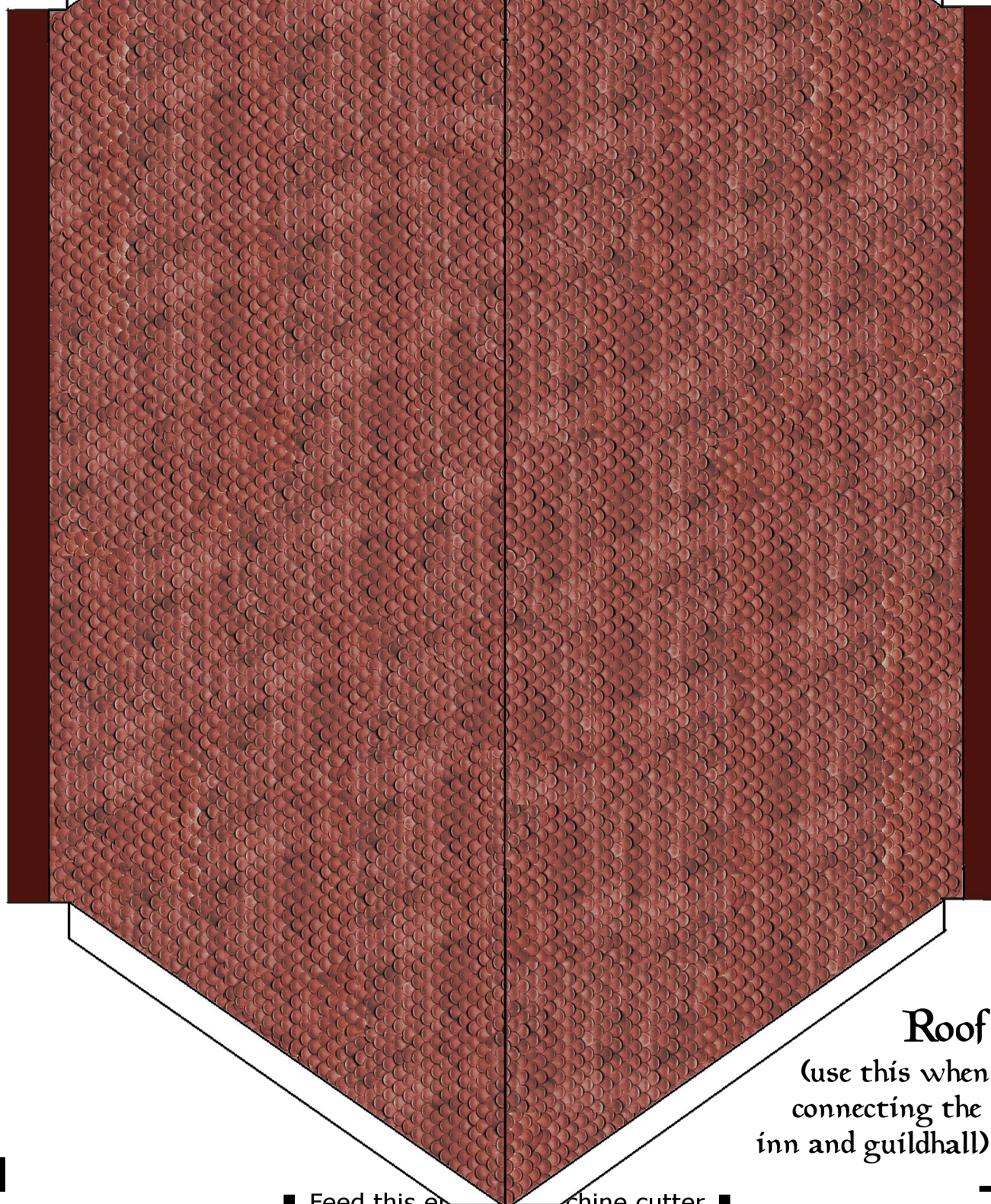


Archway



↓ Feed this end into machine cutter ↓

Printing: turn scaling OFF, have centering ON, set to GOOD or BEST setting, Use Matte Photo paper for best results.



Roof
(use this when
connecting the
inn and guildhall)

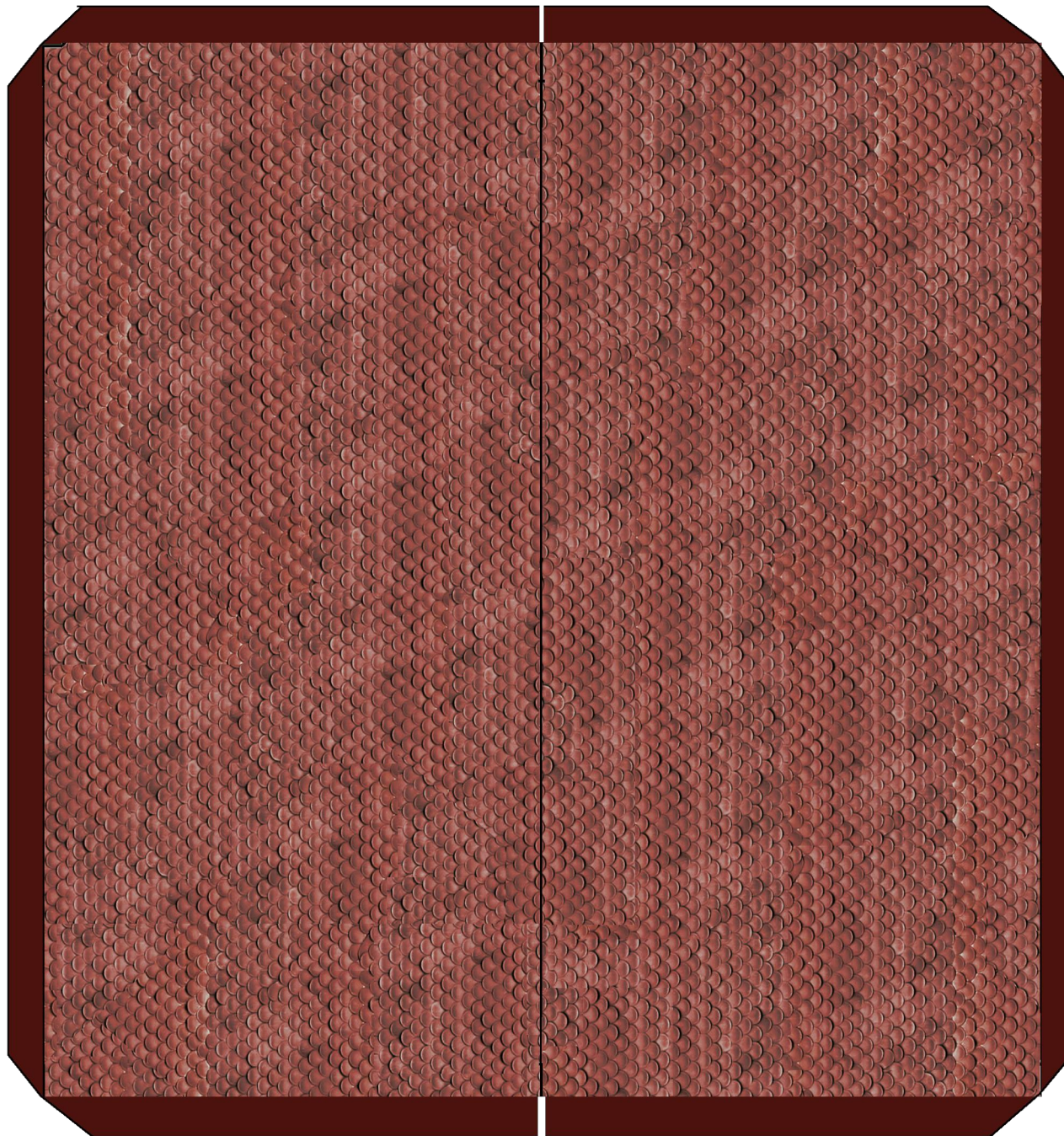
↓ Feed this end into machine cutter ↓

Printing: turn scaling OFF, have centering ON, set to GOOD or BEST setting, Use Matte Photo paper for best results.

Cardboard Warriors

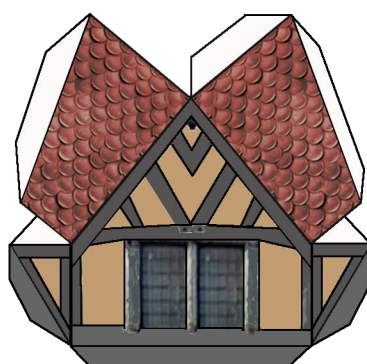
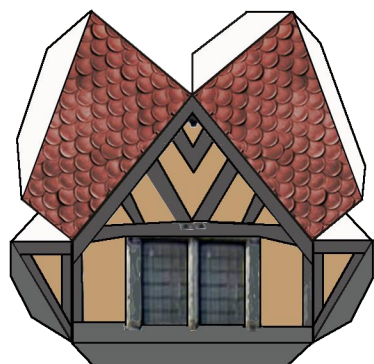
The paper miniatures wargaming forum

Roof (use this when making a stand-alone building)

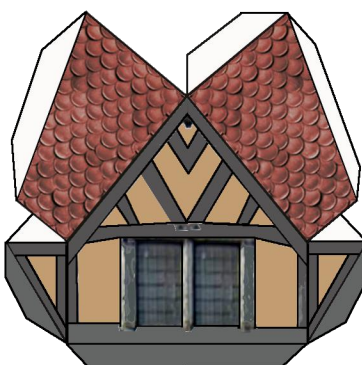
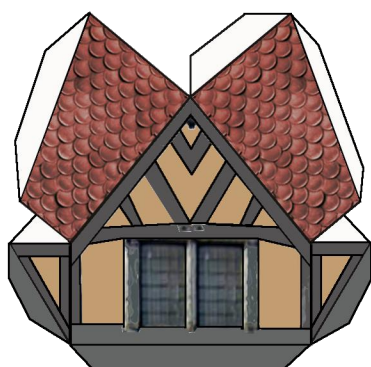


↓ Feed this end into machine cutter ↓

Printing: turn scaling OFF, have centering ON, set to GOOD or BEST setting, Use Matte Photo paper for best results.



Dormers

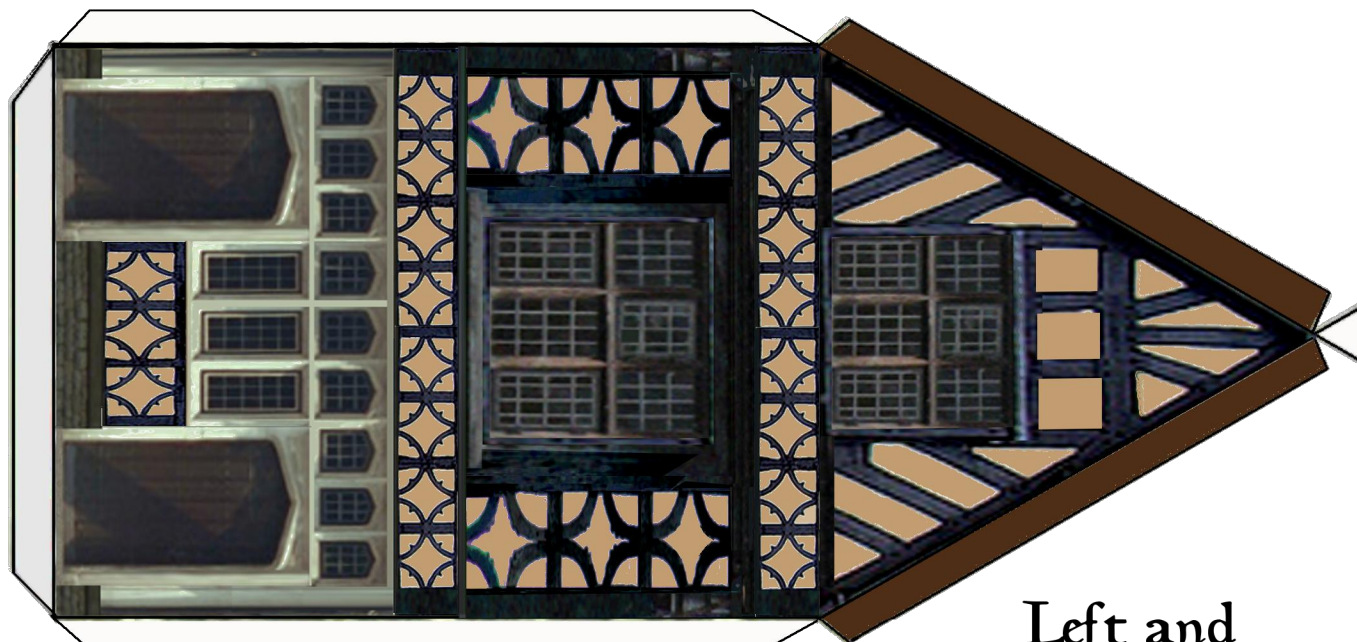


↓ Feed this end into machine cutter ↓

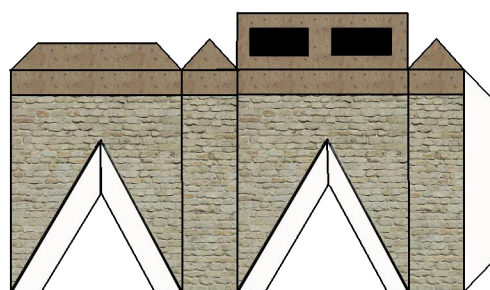
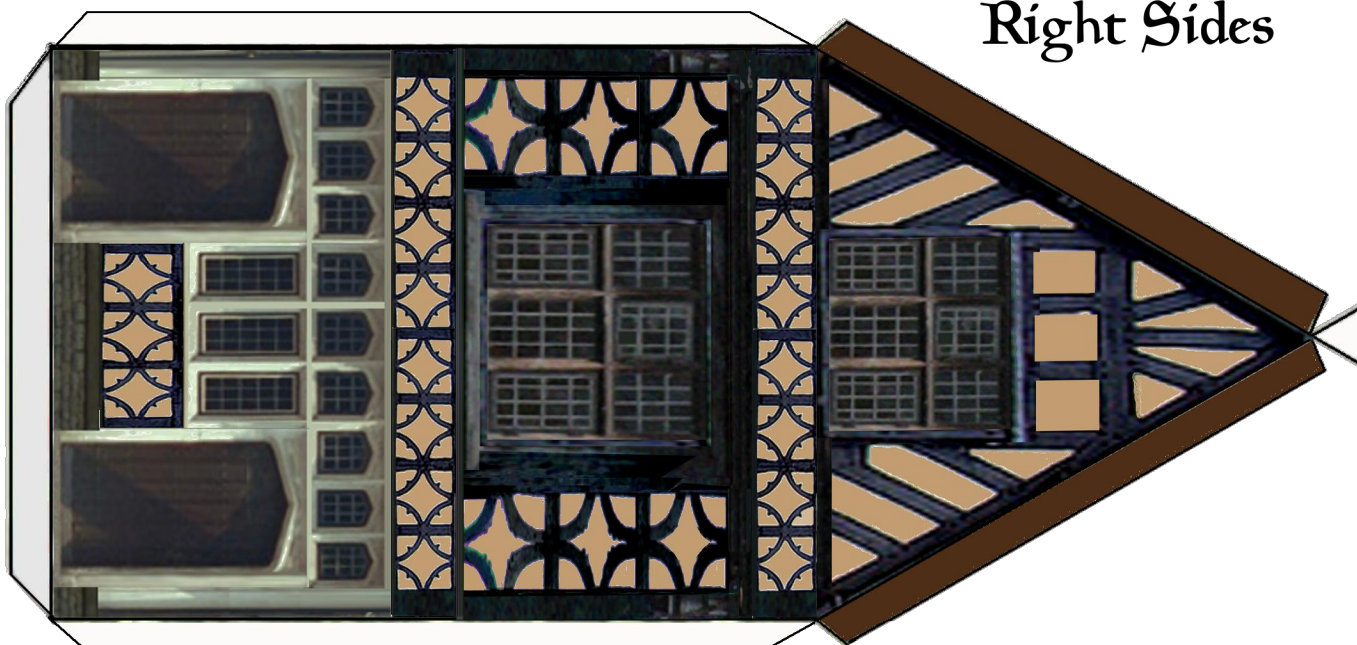
Printing: turn scaling OFF, have centering ON, set to GOOD or BEST setting, Use Matte Photo paper for best results.

Cardboard Warriors

The paper miniatures wargaming forum



Left and
Right Sides



Chimney

↓ Feed this end into machine cutter ↓

Printing: turn scaling OFF, have centering ON, set to GOOD or BEST setting, Use Matte Photo paper for best results.