

Dungeons of Olde Basic Dungeon Tile Set

Cardboard Warriors Preview Version

This preview version of the **Dungeons of Olde Basic Dungeon Tile Set** PDF contains all the tiles, clips, and accessories for the final version, laid out as they are expected to appear in the published PDF. It is presented for use and review by the members of the **Cardboard Warriors Forum** in the weeks prior to the official publication and release of the set. Any corrections, critiques, comments, or other input is enthusiastically welcomed; please contact the set's creator, user **jeffgeorge**, through the forums at <http://cardboard-warriors.proboards.com/>

Grid Scale

The tiles in the Dungeons of Olde system are designed to be printed at either of two scales: 1.25" per square, or 1" per square. If you prefer a 1.25" grid, print all pages at Actual Size (100%). If you prefer a 1" grid, print all pages at Custom Scale: 80%.

Base Core Material

The tiles in the system are designed to use foamcore board for the core of the floor or base of each tile. Cut-and-fold guidelines are provided for both dollar-store foamcore with a thickness of roughly 4.5mm, such as Readi-Board brand, and craft-store foamcore with a thickness of 3/16" or 5mm, such as Elmer's brand. Alternative materials may be used, so long as they have a thickness of either 4.5mm or 5mm.

Each tile will require a square of base material as a core. If you are creating tiles for a 1.25" square grid, cut foamcore squares to 2 15/32" as base cores; if you are creating tiles for a 1" square grid, cut foamcore squares to 1 31/32" as base cores.

Layers

This file is a layered PDF. By default, all layers are set to be both visible and printable. Before printing, open the Layers panel in Adobe Reader and turn off all layers except the "Tiles" layer and the colored-guideline layer appropriate to the base core thickness and grid scale you have chosen. Consult the table below to determine which colored-guideline layer for your chosen configuration:

	1.25" Grid	1" Grid
Dollar-Store Foamcore (4.5mm)	Red	Blue
Craft-Store Foamcore (3/16" or 5mm)	Cyan	Green

The file includes layers with registration marks for common cutting machines, labelled "Cameo Registration Marks" and "SD Registration Marks." If you are not using a cutting machine, these layers should be turned off prior to printing to conserve ink.

Assembly Instructions

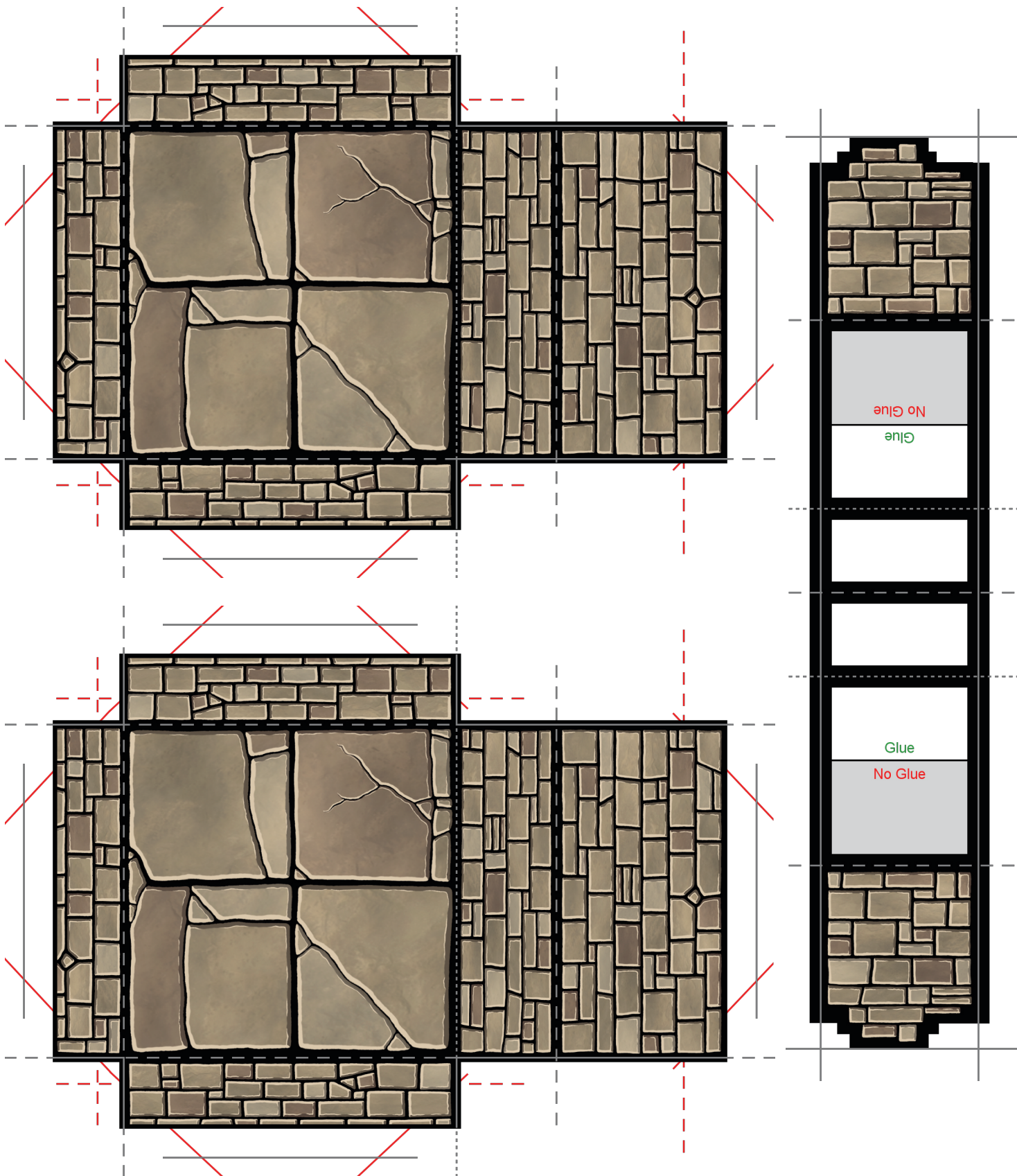
Step-by-step assembly instructions are not included in this file. However, the procedures have not changed since the release of the original, gray-stone **Dungeons of Olde** tiles on the **Cardboard Warriors Forum**. For specific instructions and illustrations, download the old version from the thread "Download Dungeons of Olde modular tiles!"

We recommend printing all pieces on 110 lb./199 g/m² cardstock. All testing for the tile system was performed using this thickness of cardstock.

Fold lines are indicated on each model with dashed or dotted lines. Dashed lines indicate mountain folds, while dotted lines indicate valley folds. Solid lines are cut lines. Fold and cut on all gray lines, plus the colored lines indicated for your base thickness and grid scale, above.

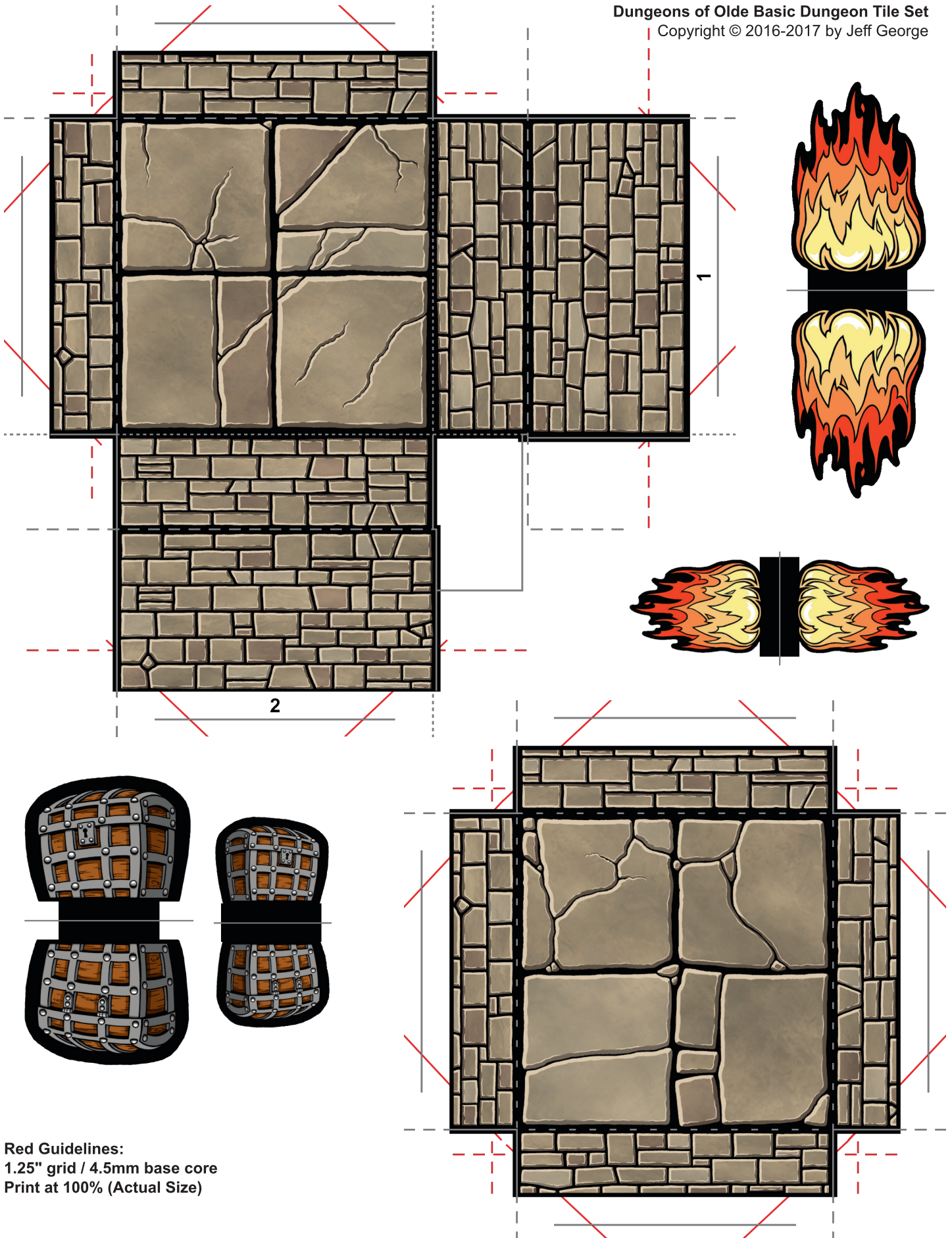
Since some fold lines will be lost when the piece is trimmed out from the surrounding cardstock, it is strongly recommended that you score all folds before trimming out the piece on the cut lines.

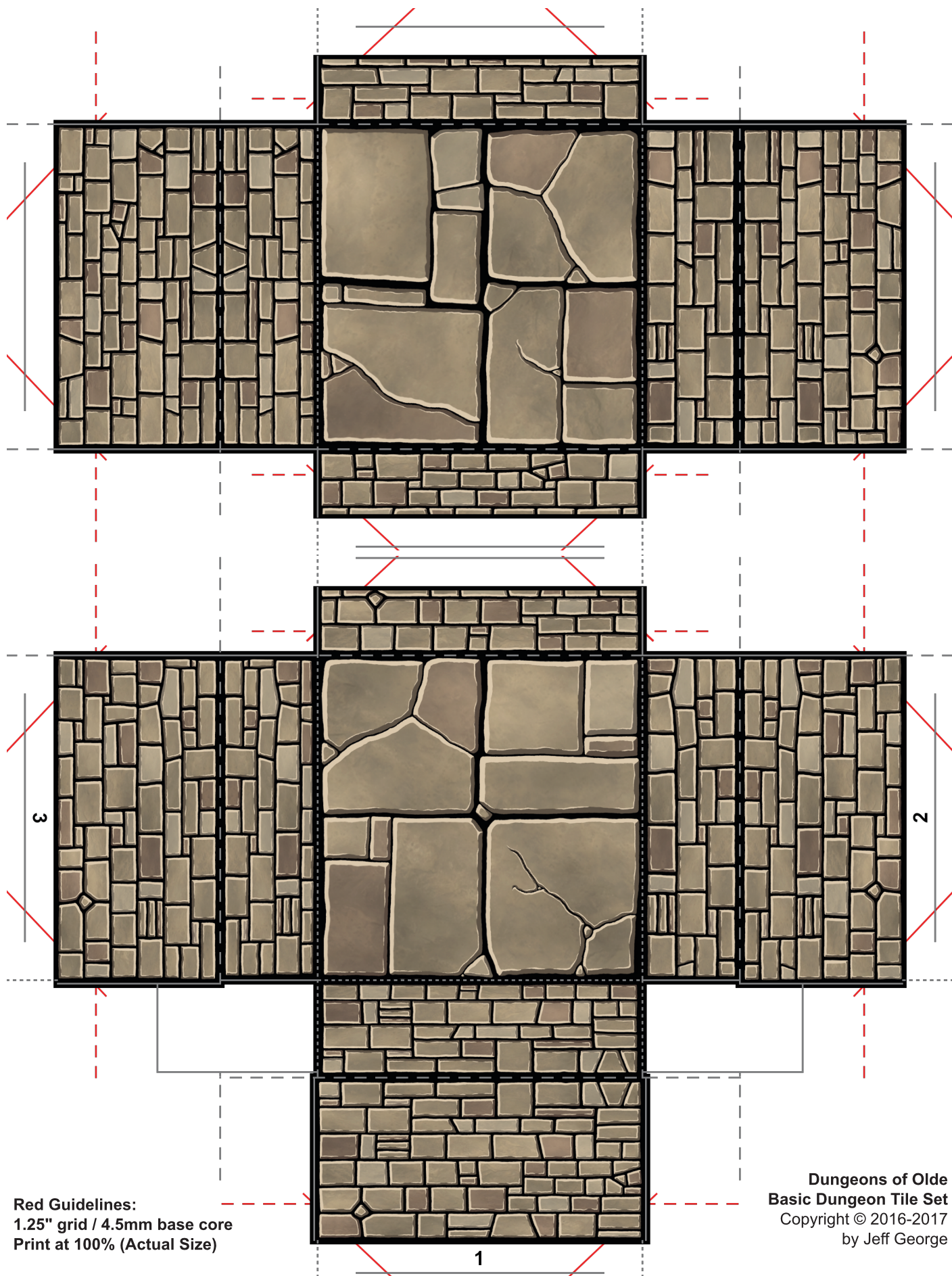
**Dungeons of Olde
Basic Dungeon Tile Set**
Copyright © 2016-2017
by Jeff George



Red Guidelines: 1.25" grid / 4.5mm base core
Print at 100%

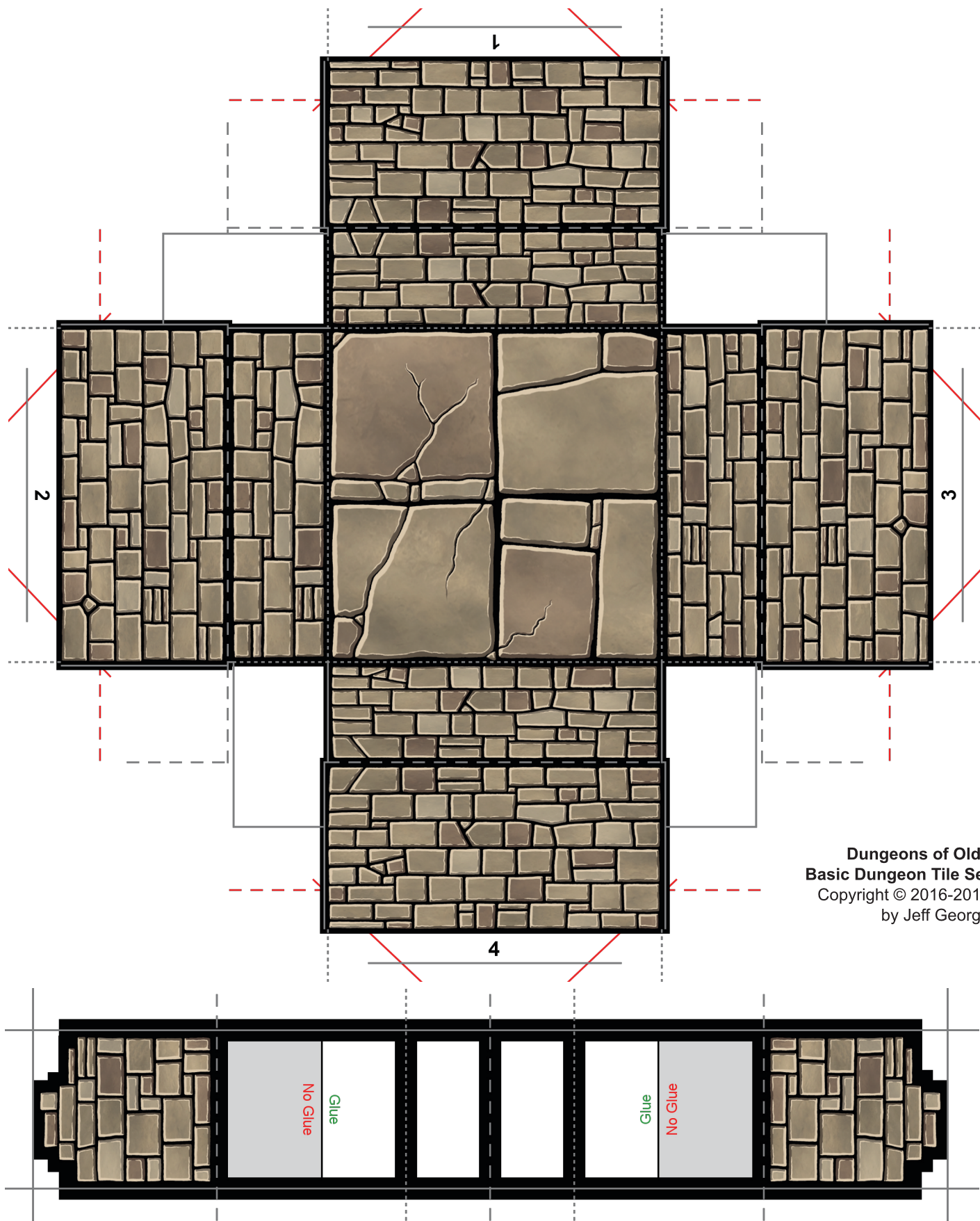
Dungeons of Olde Basic Dungeon Tile Set
Copyright © 2016-2017 by Jeff George



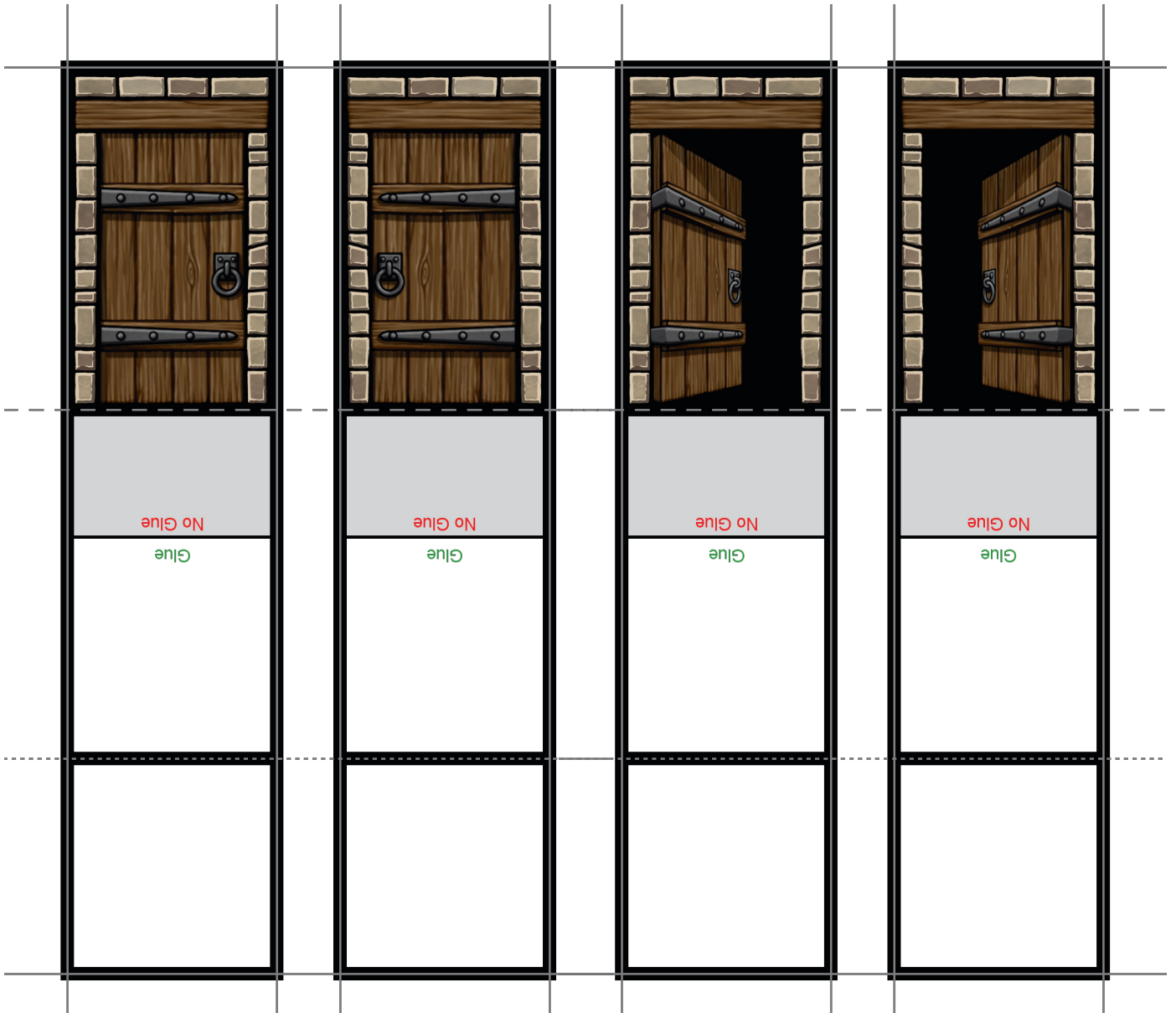


Red Guidelines:
1.25" grid / 4.5mm base core
Print at 100% (Actual Size)

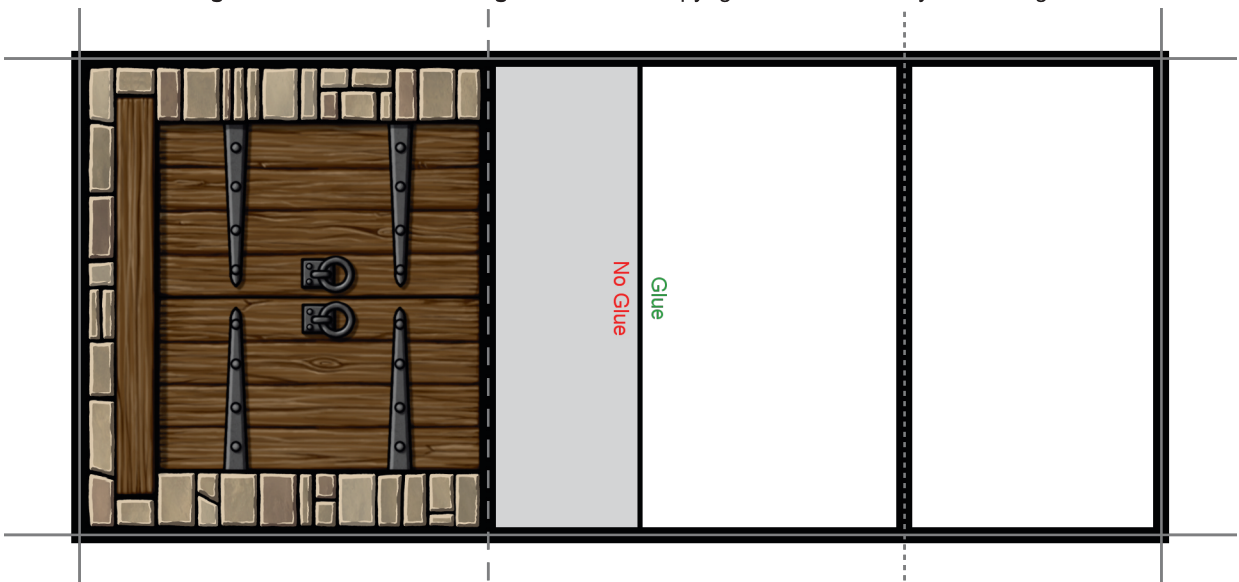
Dungeons of Olde
Basic Dungeon Tile Set
Copyright © 2016-2017
by Jeff George

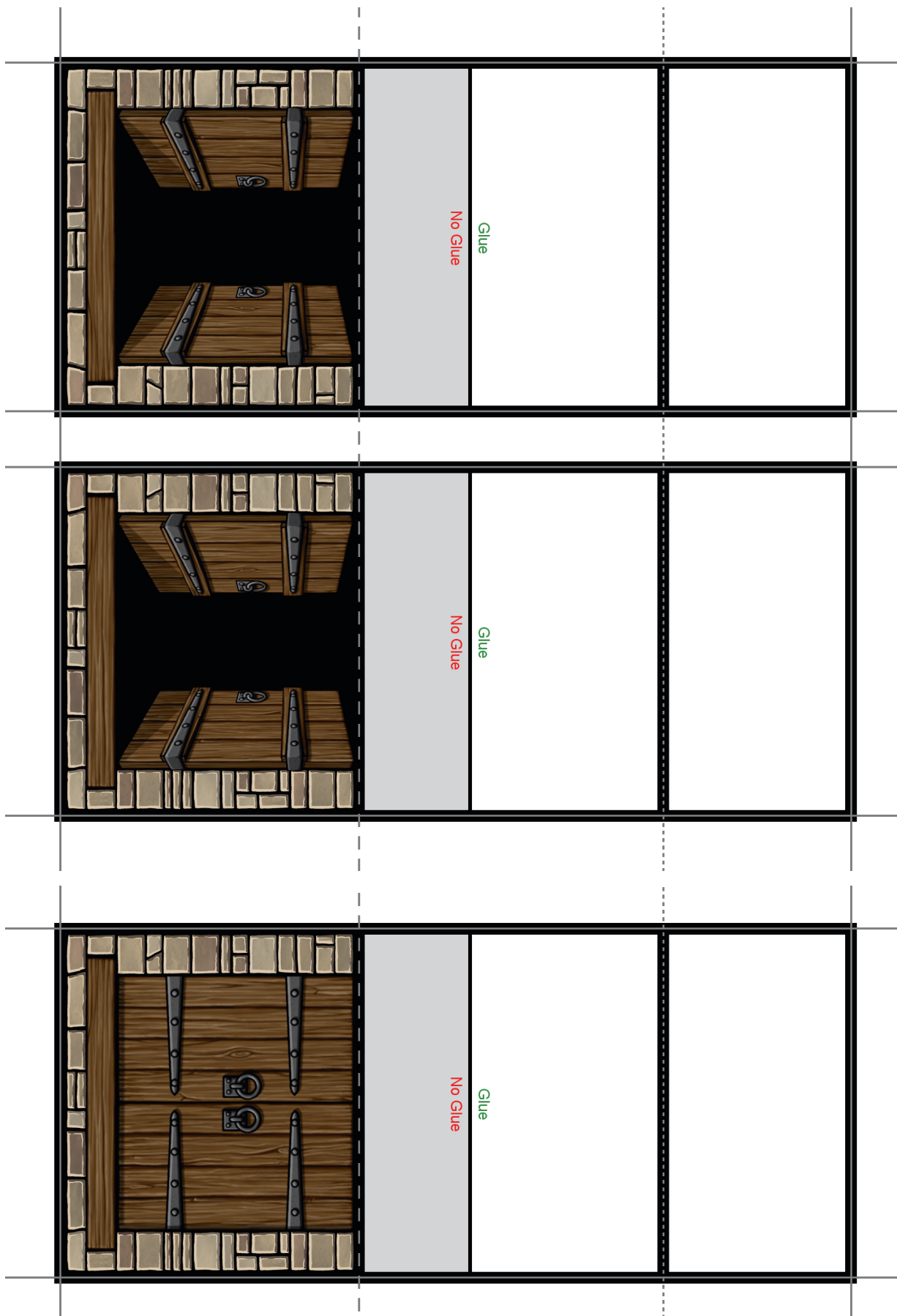


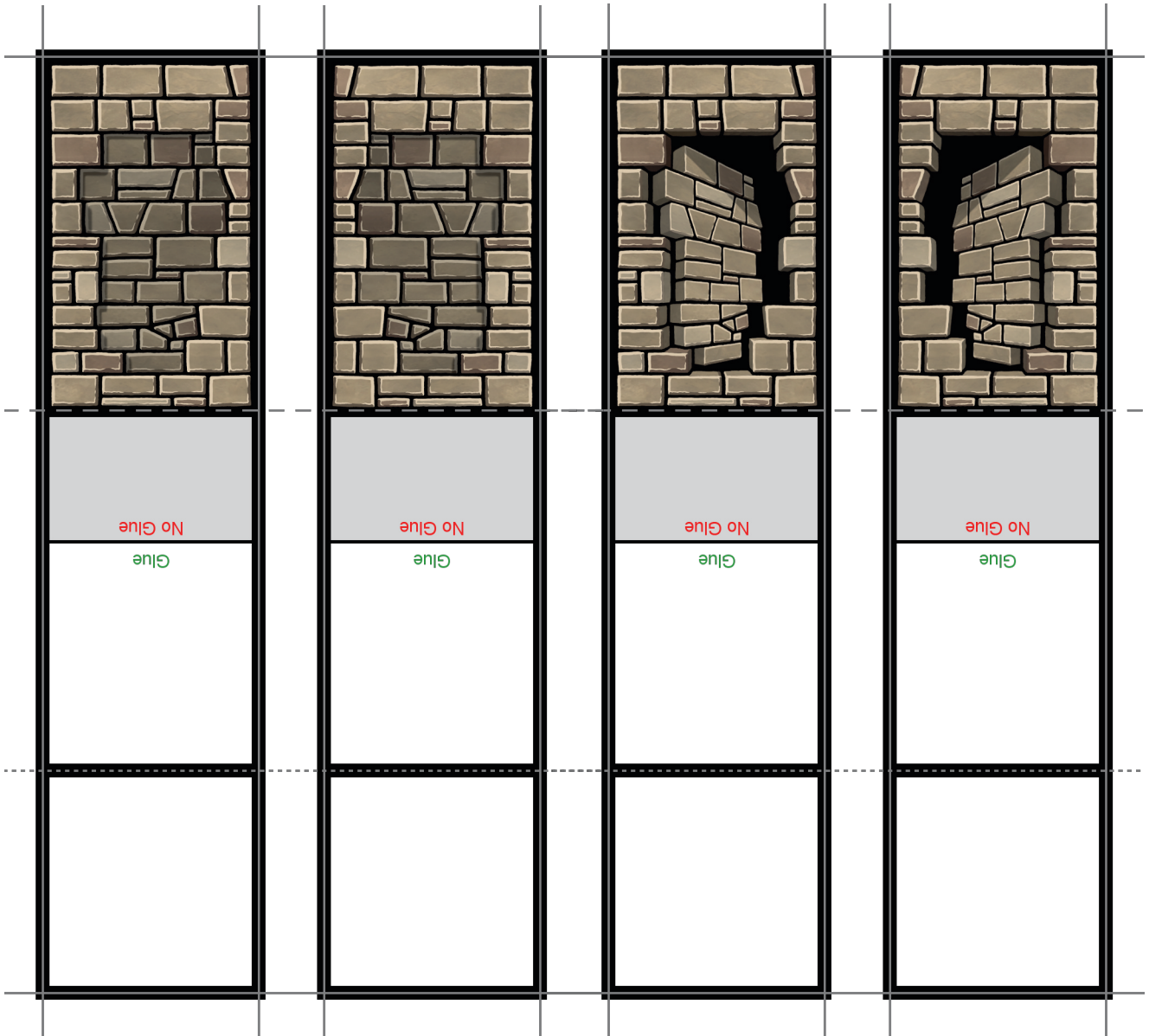
Red Guidelines: 1.25" grid / 4.5mm base core
Print at 100%



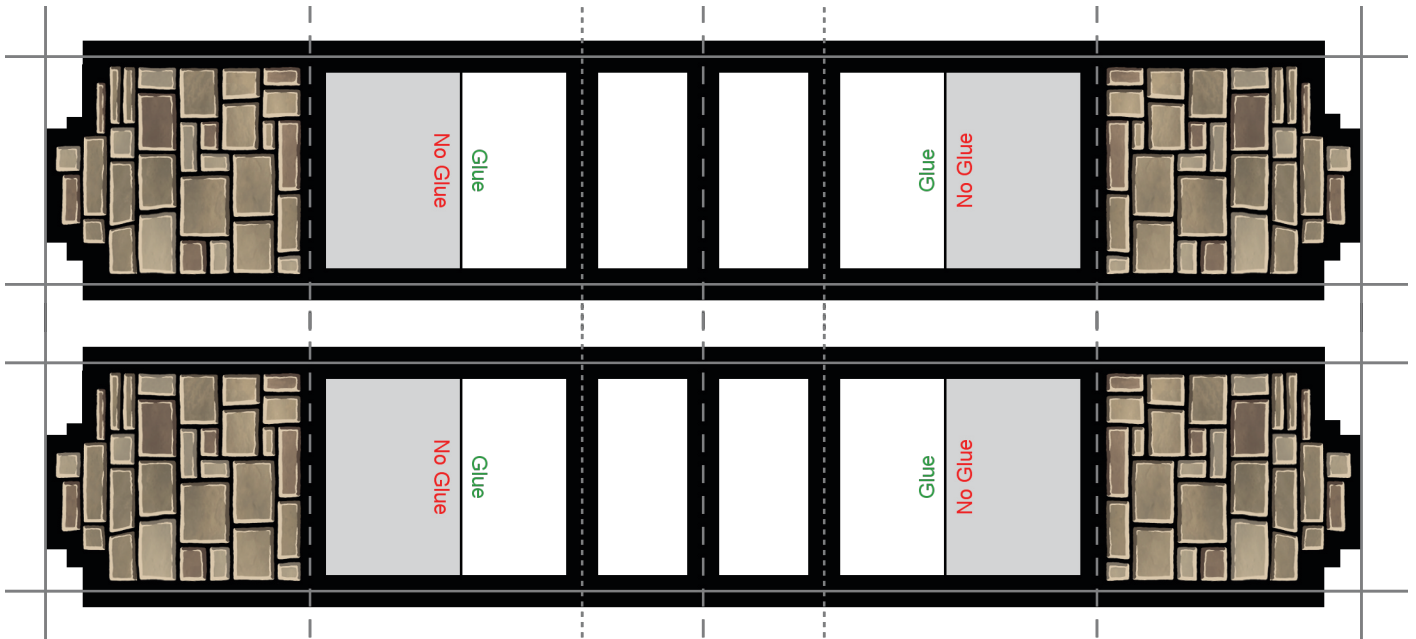
Dungeons of Olde Basic Dungeon Tile Set Copyright © 2016-2017 by Jeff George







Dungeons of Olde Basic Dungeon Tile Set Copyright © 2016-2017 by Jeff George





Dungeons of Olde Basic Dungeon Tile Set Copyright © 2016-2017 by Jeff George

