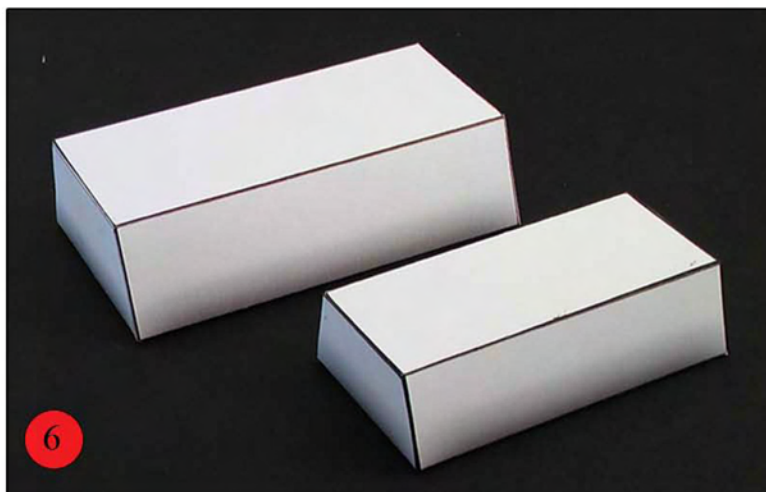
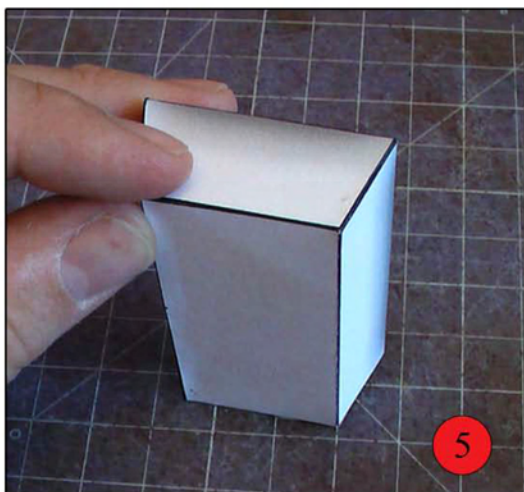
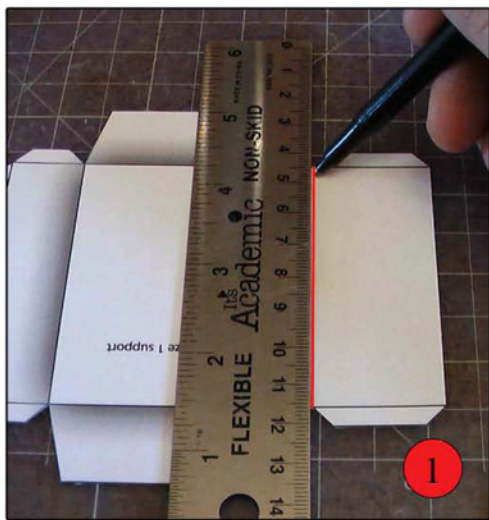


## Squirmydad's Cardmodelling Basics

Hi my name is Eric and I'd like to show you a few of my favorite tools and a few techniques that will help you in assembling your cardstock models. For starters, most of the models I design can be broken down into a collection of boxes and tubes of various sizes and shapes. The tools pictured above can be very helpful in assembling those boxes and tubes.

- 1) X-Acto Knife; Always cut by pulling a blade, never pushing. Change blades when they get dull; blades are cheap, fingers aren't. Knives work better than scissors.
- 2) Tweezers; Extremely useful for holding small pieces in place while glue is setting and generally useful for pinching glue flaps shut.
- 3) Old Ballpoint pen; I use a dried up ballpoint pen to "score" or indent a crease into the paper where it needs to fold. Some people use dulled knife blades for this, I feel that's a bad idea as cutting the paper weakens it's structure.
- 4) Marker; This is used to darken the edges where the white paper shows through after being cut. I use a marker in a brown or grey color for this activity. Also referred to as "edging".
- 5) Steel Ruler; Good for use as a guide when doing long cuts so you don't have to freehand your cut, also good for a guide when "scoring" a piece to prep it for folding. Steel is better than plastic.
- 6) Cutting Mat; A good cutting mat will prolong the life of your knife blades.
- 7) Glue; What holds it all together. I don't recommend white glue (PVA) as it has a high water content and can unduly warp the papermodel. I prefer the tackyglue pictured above as it doesn't run.
- 8) Glue-sticks; These are very good for adhering parts with a large surface area together.
- 9) Scissors! Great for big parts, bad for little parts.
- 10) Wide-tip marker: I use this marker primarily for blacking out large areas that need shading.
- 11) Plastic wedge widget: Used for burnishing flat pieces so the glue spreads evenly.

The photos on the following page demonstrate these techniques and show how to construct the simple boxes that can be used to elevate my hovercraft models.



- 1; Cut out piece and score with old ball-point pen and a straight-edge.
- 2; Fold shapes on scored lines and color white edges and flaps with marker.
- 3; Use a glue that won't unduly warp the paper, use a piece of scrap paper to spread the glue evenly and thinly.
- 4; Glue the long edges first so that the object is secured in a tubelike shape, pinch flaps together while the glue dries.
- 5; Close the ends of the tube to make a box, push the sides around while the glue is still wet to line up the pieces.
- 6; Display your boxes with pride.